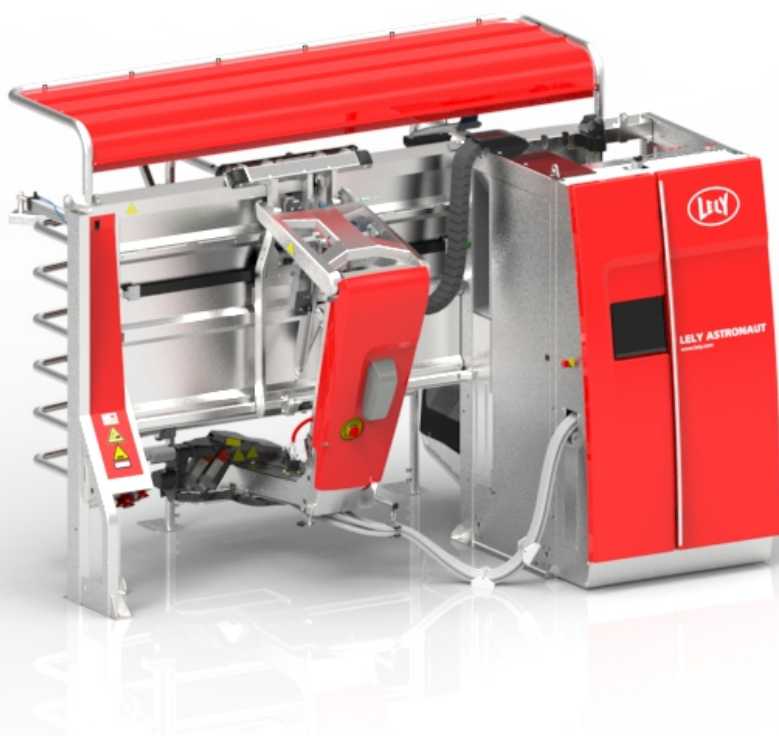


# Lely Astronaut A5

## Electronics



## Parts list

5.1005.8644.0 K

English Original





INTENTIONALLY BLANK

# Preface

## Applicability

Type number:	As from serial number:
5.1X05.00XX-X	0003242094

## Spare Parts

When ordering spare parts it is important that you are aware of the type and serial number of your machine. Use only genuine LELY parts.

## Criticality

Criticality = Bulk, 0, 1, 2

- Bulk = Bulk item.
- 0 = Not critical.
- 1 = Not very critical.
- 2 = Critical.

## Explanation of Signs Used in the Parts List

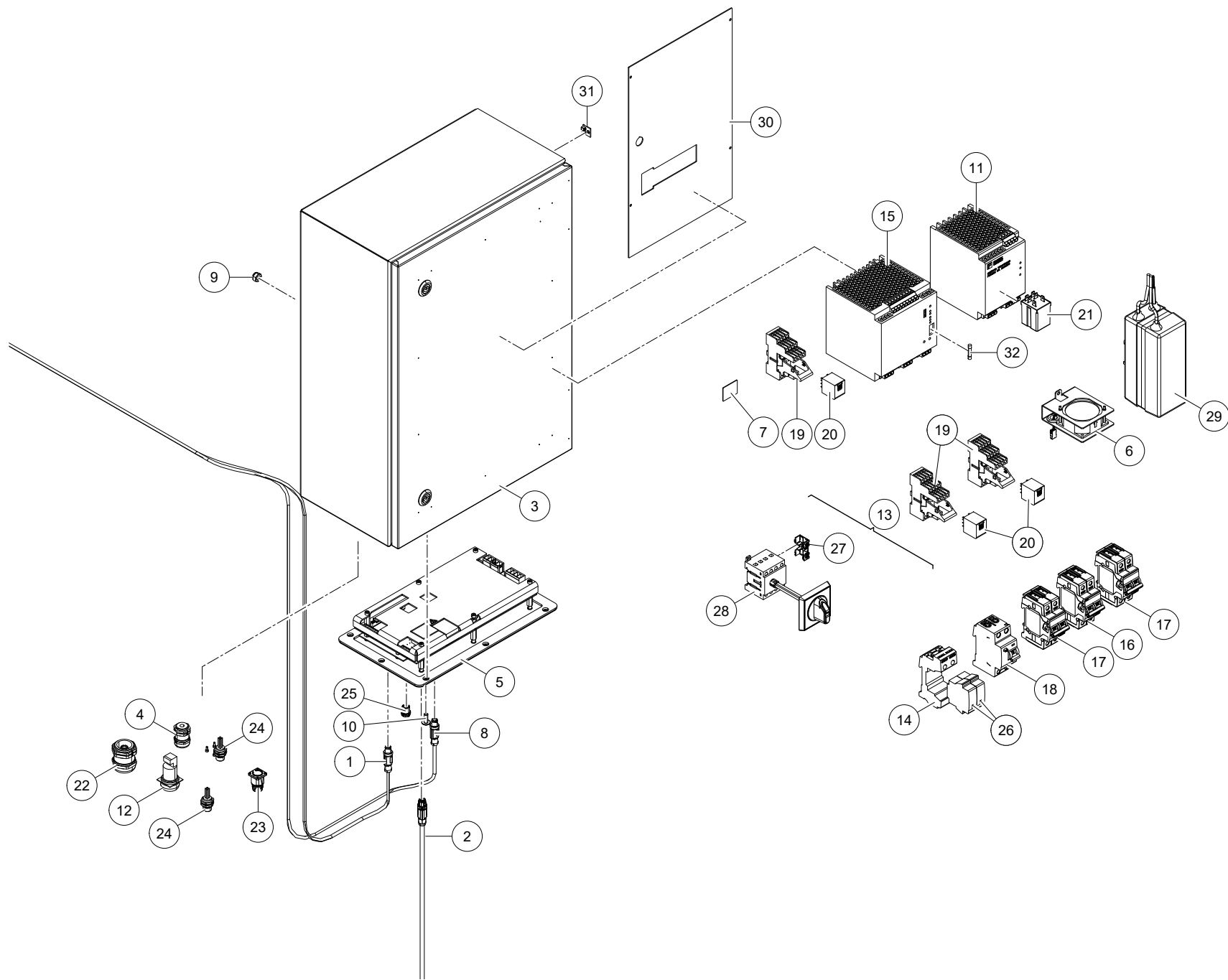
[R] / [RH]	By RH or LH version the position of the part is meant, seen from the rear of the machine.
[L] / [LH]	
[~]	E.g.: LH version is not similar to the RH version, which is actually shown.
[#]	Not available separately.

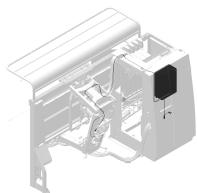


INTENTIONALLY BLANK

# Table of Contents

<b>A</b>	<b>Electronics</b>	<b>6</b>
A-1	Power Box (Rev. -)	6
A-2	Power Box (Rev. A)	8
A-3	Power Box (P2)	10
A-4	Cables & Temperature Sensor	12
A-5	Arm Power Supply Unit (APSU)	14
A-6	GCB & GIOBs & LCIB	16
A-7	Power Box Autotransformer (3Ph 200/230 VAC)	18





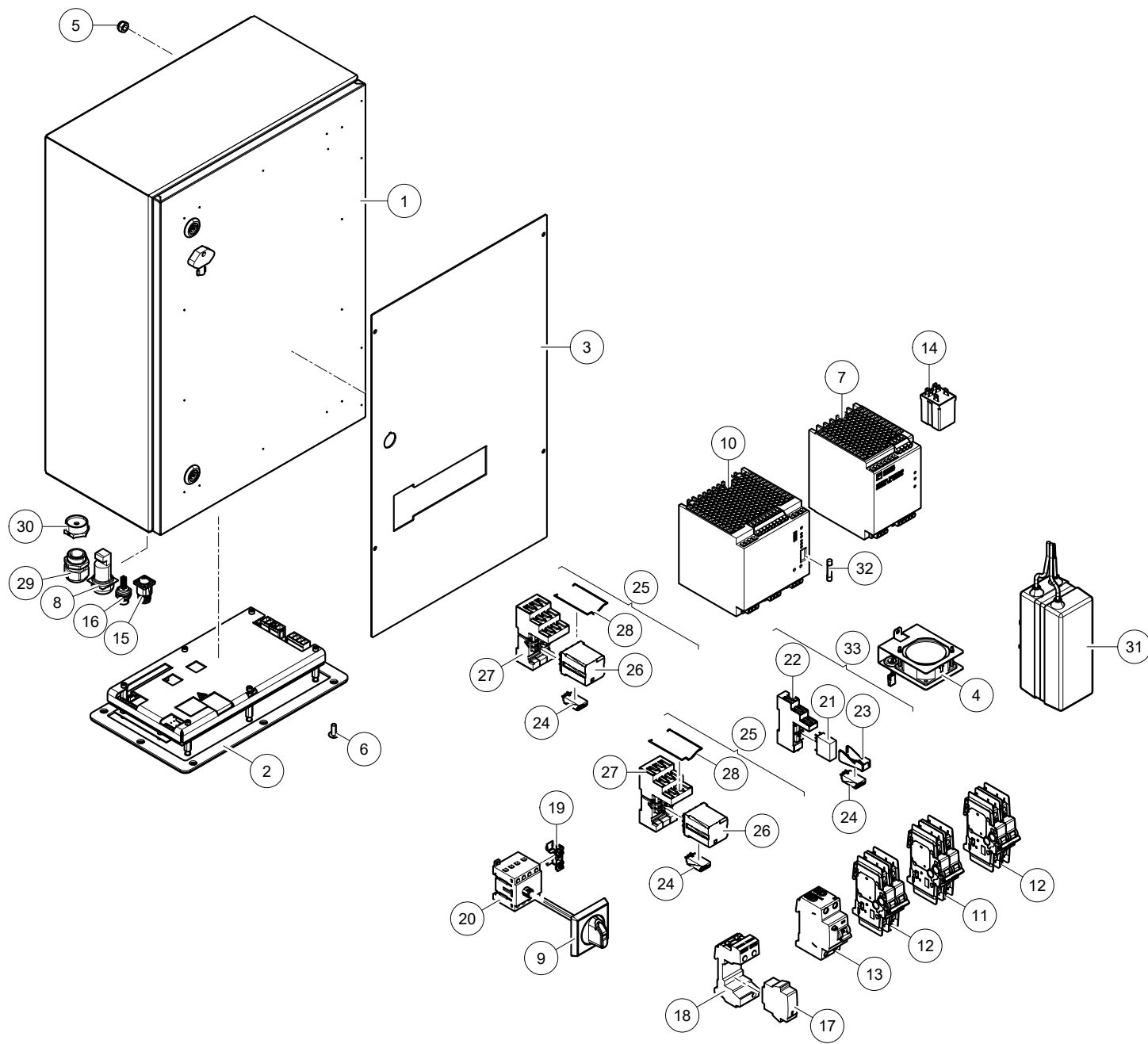
Lely Astronaut A5

Electronics

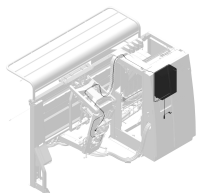
5.1X05.00XX-X

0003252469

Ref.	Part No	Qty.	Description	Techn. info	Criticality	Remark
1	5.1005.2231.0	1	Cable	SAC-5P-MSB/5.6-PUR SCO		
2	5.1005.2232.0	1	Cable	SAC-5P-MS/0.5-920/C016 SCO		
3	#####	1	Not separately			
4	#####	1	Not separately			
5	5.1005.2905.0	1	Electronics	PCB PACKAGE		
6	5.1005.3047.0	1	Set			
7	5.1005.3499.0	1	Decal	Screening		
8	6.2001.1033.0	1	Cable	SAC-5P-MSB/5.0-PUR/FRB SCO		
9	9.1030.0020.4	3	Nut	M8 DIN985-A2-2 s/s		
10	9.1057.0468.0	8	Low head screw	M6x16 ISO7380-2 A2-70 Tuflock 360 blue nylon		
11	9.1185.0993.0	1	Power supply	Quint-ps/ 1AC/24C		
12	9.1185.0998.0	1	Buzzer	12-24V AC/DC		
13	#####	1	Not separately			
14	#####	1	Not separately			
15	9.1186.1044.0	1	Power source	QUINT-UPS/1AC/1AC/500VA		
16	9.1186.1045.0	1	Switch	CIRCUIT BREAKER S202 U-C4		
17	9.1186.1046.0	2	Switch	CIRCUIT BREAKER S202 U-C10		
18	9.1186.1047.0	1	Switch	EARTH FAULT PROTECTOR F202 A-40/0.03		
19	9.1186.1050.0	3	Set			
20	#####	3	Not separately			
21	9.1186.1054.0	1	Relay	POWER PLUG-IN RELAY		
22	9.1186.1055.0	1	Cable gland	M32x1.5 WITH NUT		
23	9.1186.1056.0	1	Connector	M17 DEVICE CONNECTOR		
24	9.1186.1057.0	2	Connector	FLUSH TYPE WIRED		
25	9.1186.1059.0	1	Plug	M12 screw plug SPEEDCON		
26	9.1186.1101.0	2	Relay	CARDRIDGE 320/40kA		
27	9.1186.1105.0	1	Switch	AUXILIARY CONTACT - OA2G11		
28	9.1186.1107.0	1	Switch	MAIN SWITCH 4P/40A/IP20 - OT40F4N2		
29	9.1189.0292.0	1	Battery	WAM UR18650RX 7S2P WITH BRACKET		
30	5.1005.3006.0	1	Cover	TRANSPARANT COVER PLATE		
31	9.1190.5021.0	1	Temperature Sensor			
32	9.1190.9804.0	1	Glass fuse	S 10A (6.35 X 32)		







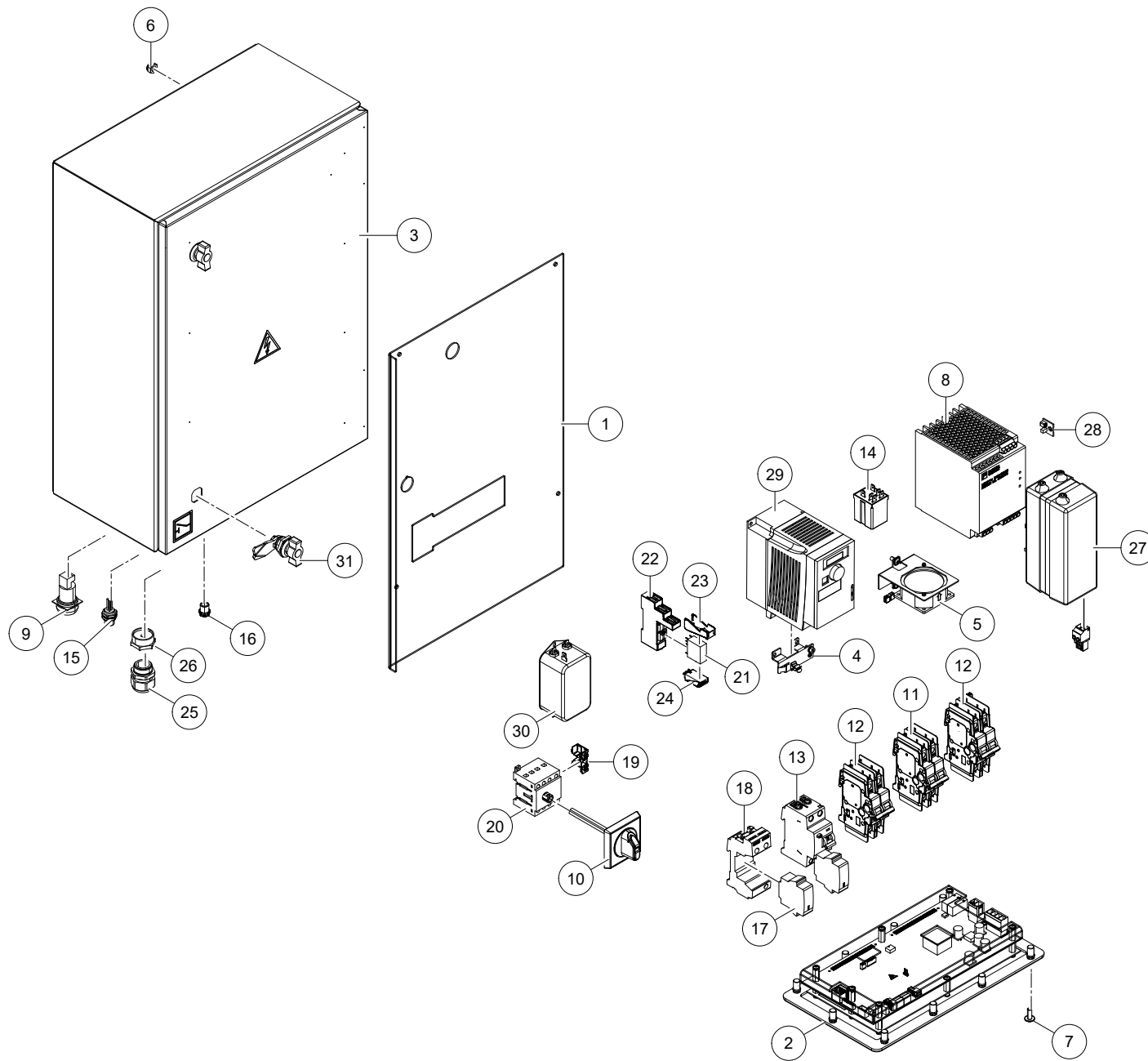
Lely Astronaut A5

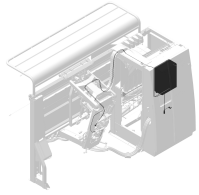
Electronics

5.1X05.00XX-X

0003252469

Ref.	Part No	Qty.	Description	Techn. info	Criticality	Remark
1	#####	1	Not separately			
2	5.1005.2905.0	1	Electronics	PCB PACKAGE		
3	5.1005.3006.0	1	Cover	TRANSPARENT COVER PLATE		
4	5.1005.3047.0	1	Set			
5	9.1030.0020.4	3	Nut	M8 DIN985-A2-2 s/s		
6	9.1057.0468.0	8	Low head screw	M6x16 ISO7380-2 A2-70 Tuflock 360 blue nylon		
7	9.1185.0993.0	1	Power supply	Quint-ps/ 1AC/24C		
8	9.1185.0998.0	1	Buzzer	12-24V AC/DC		
9	#####	1	Not separately			
10	9.1186.1044.0	1	Power source	QUINT-UPS/1AC/1AC/500VA		
11	9.1186.1045.0	1	Switch	CIRCUIT BREAKER S202 U-C4		
12	9.1186.1046.0	2	Switch	CIRCUIT BREAKER S202 U-C10		
13	9.1186.1047.0	1	Switch	EARTH FAULT PROTECTOR F202 A-40/0.03		
14	9.1186.1054.0	1	Relay	POWER PLUG-IN RELAY		
15	9.1186.1056.0	1	Connector	M17 DEVICE CONNECTOR		
16	9.1186.1057.0	2	Connector	FLUSH TYPE WIRED		
17	9.1186.1101.0	2	Relay	CARDRIDGE 320/40kA		
18	#####	1	Not separately			
19	9.1186.1105.0	1	Switch	AUXILIARY CONTACT - OA2G11		
20	9.1186.1107.0	1	Switch	MAIN SWITCH 4P/40A/IP20 - OT40F4N2		
21	9.1186.1123.0	1	Relay			
22	9.1186.1124.0	1	Socket			
23	9.1186.1125.0	1	Clip			
24	9.1186.1126.0	3	Module	Coil indication and EMC suppression		
25	9.1186.1127.0	2	Relay module			
26	9.1186.1128.0	2	Relay			
27	9.1186.1129.0	2	Socket			
28	9.1186.1131.0	2	Clip			
29	9.1186.1132.0	1	Cable gland	M25x1.5		
30	#####	1	Not separately			
31	9.1189.0292.0	1	Battery	WAM UR18650RX 7S2P WITH BRACKET		
32	9.1190.9804.0	1	Glass fuse	S 10A (6.35 X 32)		
33	9.1186.1122.0	1	Relay module			





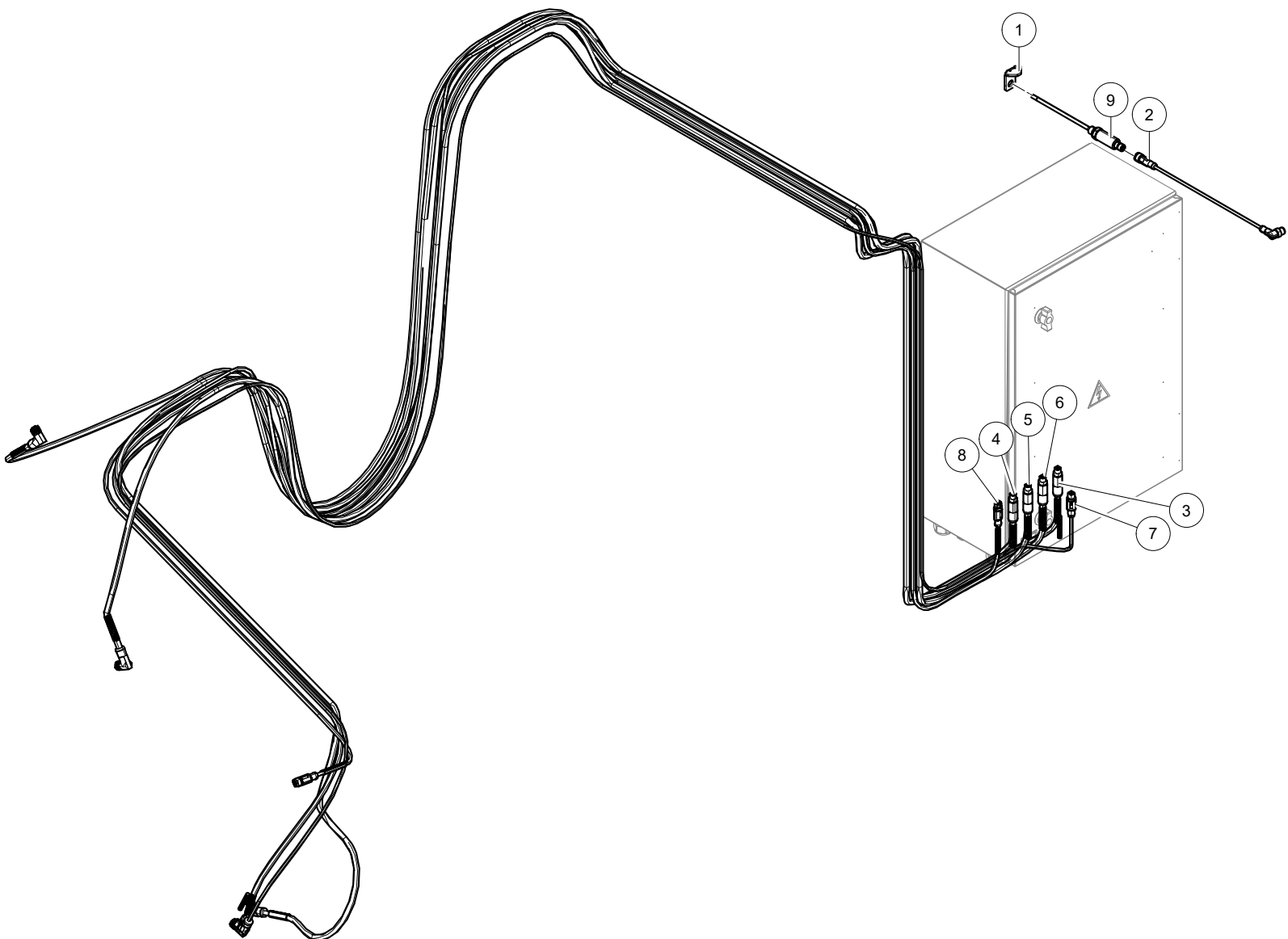
Lely Astronaut A5

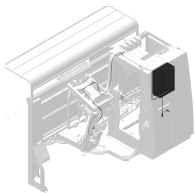
Electronics

5.1X05.00XX-X

0003252469

Ref.	Part No	Qty.	Description	Techn. info	Criticality	Remark
1	5.1005.5193.0	1	Cover	P2 Electronics		
2	5.1005.5197.0	1	Electronics			
3	#####	1	Not separately			
4	5.1005.5425.0	1	Plate	EMC		
5	5.1005.5426.0	1	Fan			
6	9.1030.0020.4	3	Nut	M8 DIN985-A2-2 s/s		
7	9.1057.0468.0	10	Low head screw	M6x16 ISO7380-2 A2-70 Tuflock 360 blue nylon		
8	9.1185.0993.0	1	Power supply	Quint-ps/ 1AC/24C		
9	9.1185.0998.0	1	Buzzer	12-24V AC/DC		
10	#####	1	Not separately			
11	9.1186.1045.0	1	Switch	CIRCUIT BREAKER S202 U-C4		
12	9.1186.1046.0	2	Switch	CIRCUIT BREAKER S202 U-C10		
13	9.1186.1047.0	1	Switch	EARTH FAULT PROTECTOR F202 A-40/0.03		
14	9.1186.1054.0	1	Relay	POWER PLUG-IN RELAY		
15	9.1186.1057.0	1	Connector	FLUSH TYPE WIRED		
16	9.1186.1059.0	1	Plug	M12 screw plug SPEEDCON		
17	9.1186.1101.0	2	Relay	CARDRIDGE 320/40kA		
18	#####	1	Not separately			
19	9.1186.1105.0	1	Switch	AUXILIARY CONTACT - OA2G11		
20	9.1186.1107.0	1	Switch	MAIN SWITCH 4P/40A/IP20 - OT40F4N2		
21	9.1186.1123.0	1	Relay			
22	9.1186.1124.0	1	Socket			
23	9.1186.1125.0	1	Clip			
24	9.1186.1126.0	1	Module	Coil indication and EMC suppression		
25	9.1186.1132.0	2	Cable gland	M25x1.5		
26	#####	2	Not separately			
27	9.1189.0999.0	1	Battery	WAM 7S2P ICR18650-20SG WITH BRACKET		
28	9.1190.5021.0	1	Temperature sensor			
29	9.1190.7822.0	1	Electrical control	Variable speed drive ATV320 - 0.75kW		
30	9.1190.9706.0	1	Electronics	EMI FILTER		
31	5.1005.5427.0	2	Lock			

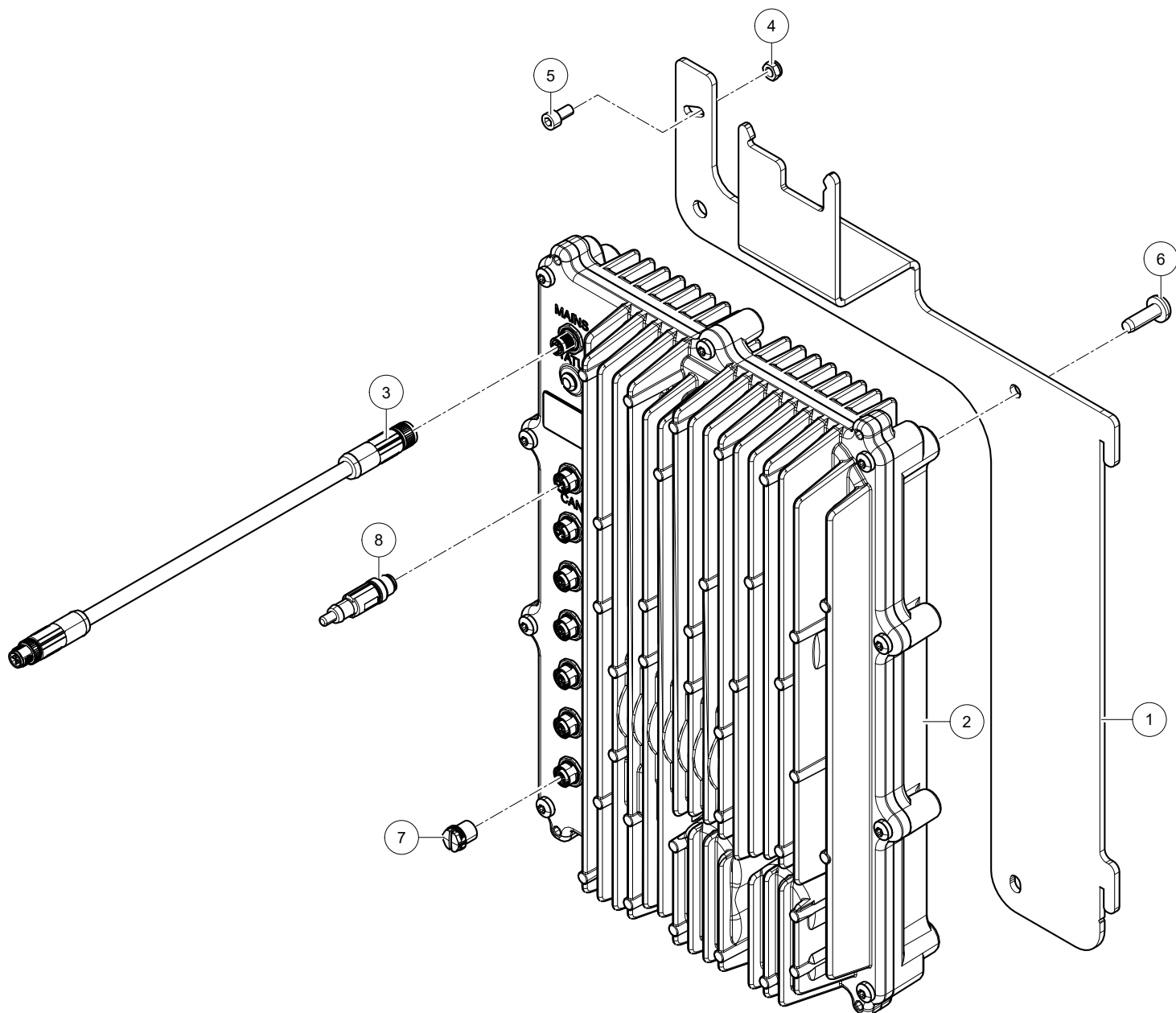


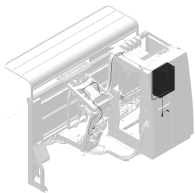


Lely Astronaut A5      Electronics      5.1X05.00XX-X      0003252469

Ref.	Part No	Qty.	Description	Techn. info	Criticality	Remark
1	5.1005.2608.0	1	Plate			
2	6.2001.1019.0	1	Cable			
3	6.2001.1029.0	1	Cable	SAC-4P-MST/5.0-PUR/FRT SCO		
4	6.2001.1031.0	1	Cable	SAC-4P-MST/5.3-PUR/FRT SH SCO		
5	6.2001.1031.0	1	Cable	SAC-4P-MST/5.3-PUR/FRT SH SCO		
6	6.2001.1031.0	1	Cable	SAC-4P-MST/5.3-PUR/FRT SH SCO		
7	6.2001.1033.0	1	Cable	SAC-5P-MSB/5.0-PUR/FRB SCO		
8	6.2001.1034.0	1	Cable	SAC-5P-MS/4.6-920/FS SCO		
9	9.1183.0082.0	1	Sensor			



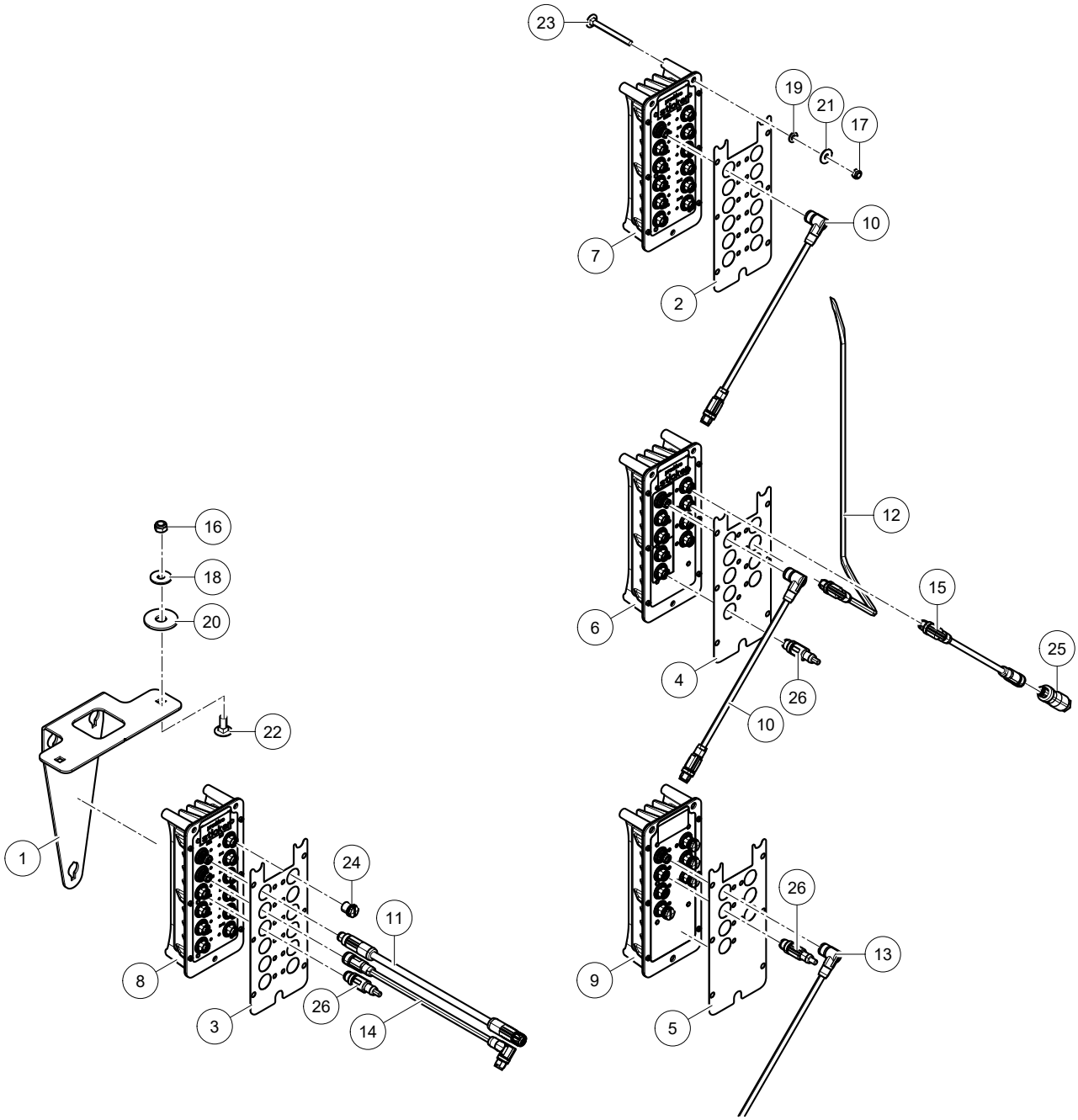




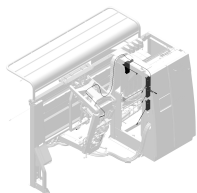
Lely Astronaut A5      Electronics      5.1X05.00XX-X      0003252469

Ref.	Part No		Qty.	Description	Techn. info	Criticality	Remark
1	5.1005.2963.0	[R]	1	Bracket			
	5.1105.2963.0	[L]	~	Bracket			
2	5.1005.3404.0		1	Set	APSU with Fasteners		
3	6.2001.1024.0		1	Cable	SAC-4P-MSS/2.9-PUR/FSS PE SCO		
4	9.1030.0021.5		1	Nut	M6 DIN985-A2-2 s/s		
5	9.1057.0067.3		1	Socket head screw	M6x12 DIN912-A2 s/s		
6	#####		3	Not separately	DIN7500PE		
7	9.1186.1059.0		1	Plug	M12 screw plug SPEEDCON		
8	9.1186.1094.0		1	Resistor			









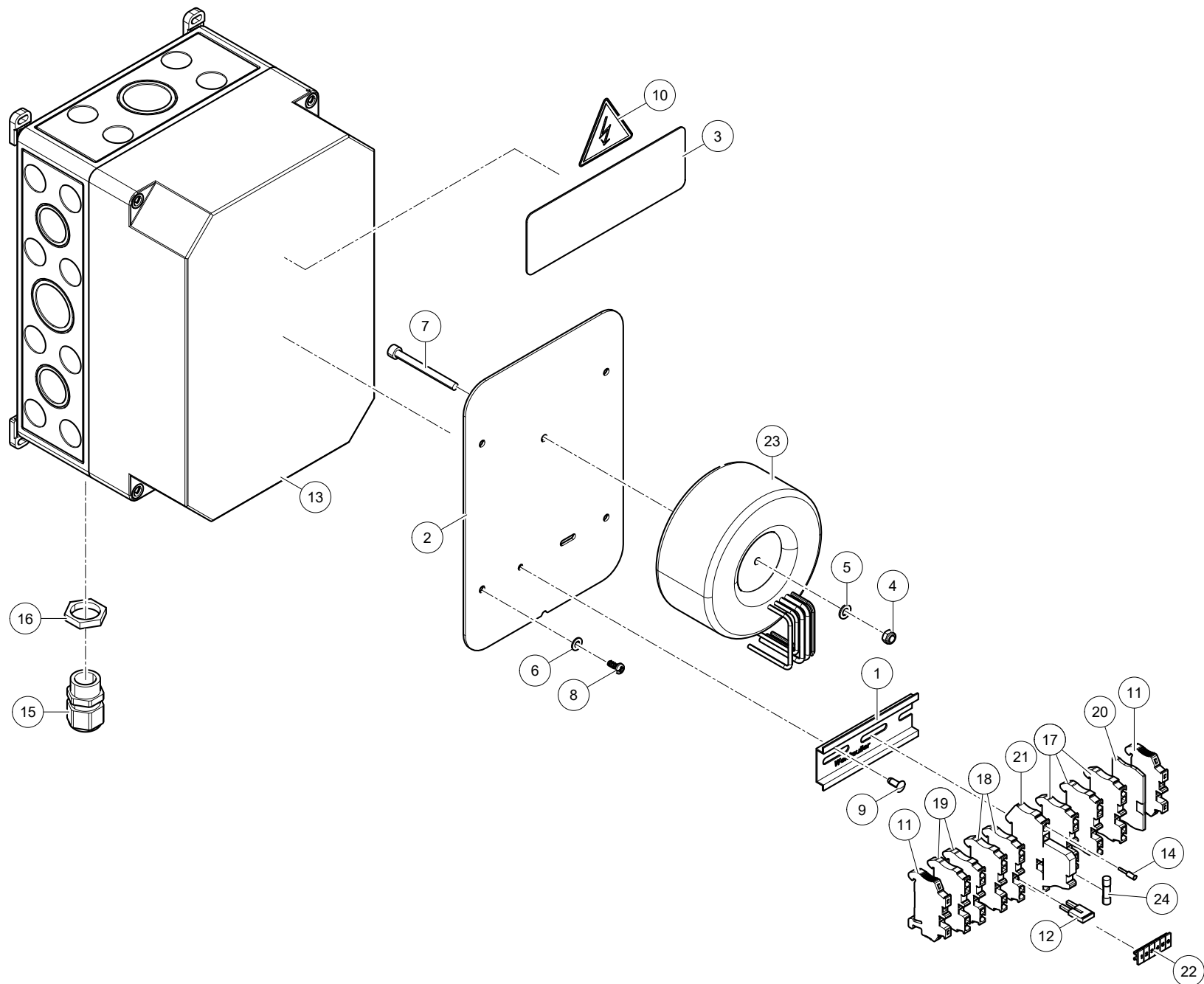
Lely Astronaut A5

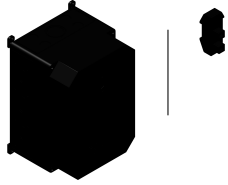
Electronics

5.1X05.00XX-X

0003252469

Ref.	Part No	Qty.	Description	Techn. info	Criticality	Remark
1	5.1005.2964.0	1	Bracket			
2	5.1005.3048.0	1	Label			
3	5.1005.3049.0	1	Label			
4	5.1005.3951.0	1	Label	RCB		
5	5.1005.3953.0	1	Label	LCIB		
6	6.2001.0211.0	1	Module	GCB-T4 General control		
7	6.2001.0275.0	1	Module	LPT1 - LOW POWER GIOB		
8	6.2001.0280.0	1	Module			
9	6.2001.0281.0	1	Module	LCIB - LOAD CELL INTERFACE BOX		
10	6.2001.1020.0	2	Cable	SAC-5P-MS-FR SCO BUS		
11	6.2001.1023.0	1	Cable	SAC-4P-MST/2.2-PUR/FST SCO		
12	6.2001.1035.0	1	Cable			
13	6.2001.1043.0	1	Cable	SAC-5P-MR/0.4-920/FR SCO		
14	6.2001.1044.0	1	Cable	SAC-5P-MR/1.1-920/FS SCO		
15	6.2001.1053.0	1	Cable	NBC-MRD/1.5-93H/FSD SCO		
16	9.1030.0020.4	2	Nut	M8 DIN985-A2-2 s/s		
17	9.1030.0021.5	12	Nut	M6 DIN985-A2-2 s/s		
18	9.1048.0052.4	2	Washer	A8.4 DIN9021-A2 s/s		
19	9.1048.0090.0	12	Washer	A6.4 DIN125-A2 s/s		
20	9.1048.0092.2	2	Washer	A13 DIN9021-A2 s/s		
21	9.1048.0095.5	12	Washer	A6.4 DIN9021-A2 s/s		
22	9.1058.0032.2	2	Coach bolt	M8x20 DIN603 s/s		
23	9.1058.0059.1	12	Coach bolt	M6x65 DIN603-A2 s/s		
24	9.1186.1059.0	9	Plug	M12 screw plug SPEEDCON		
25	9.1186.1066.0	1	Connector	SACC-MSD-4QO SH ETH SCO		
26	9.1186.1094.0	3	Resistor			





Lely Astronaut A5

Electronics

5.1X05.00XX-X

0003252469

Ref.	Part No	Qty.	Description	Techn. info	Criticality	Remark
1	5.1004.1580.0	1	Junction box			
2	#####	1	Not separately			
3	5.1005.3435.0	1	Decal	TRANSFORMER 200-230VAC		
4	9.1030.0035.5	1	Nut	M5 DIN985-A2-2 s/s		
5	9.1048.0086.3	1	Washer	A5.3 DIN125-A2 s/s		
6	9.1048.0089.6	2	Washer	A4.3 DIN125-A2 s/s		
7	9.1057.0189.0	1	Screw			
8	#####	4	Not separately			
9	9.1152.0021.0	2	Blind rivet	4.08x8.7 galv		
10	9.1170.0928.0	1	Decal	High voltage hazard "50mm CE"		
11	9.1185.0840.6	2	End bracket			
12	9.1185.0907.0	1	Jumper	FBS 2-6		
13	#####	1	Not separately			
14	9.1186.0019.1	2	Cable core	0.75mm2		
15	9.1186.0248.6	2	Swivel	M20x1.5		
16	9.1186.0249.0	2	Swivel nut	M20x1.5		
17	9.1190.0013.0	3	Terminal			
18	9.1190.0015.0	2	Terminal			
19	#####	2	Not separately			
20	#####	1	Not separately			
21	9.1190.0096.0	1	Terminal	Fuse modular terminal block		
22	#####	1	Not separately			
23	9.1190.7706.0	1	Electronics	TRANSFORMER		
24	9.1190.9807.0	2	Fuse			



INTENTIONALLY BLANK



**Lely Industries N.V.**

Cornelis van der Lelylaan 1

NL-3147 PB Maassluis

Tel +31 (0)88 - 12 28 221

Fax +31 (0)88 - 12 28 222

