

Lely Astronaut

Central Unit

Central Control Box



Parts list

5.1005.8565.0 E

English Original





INTENTIONALLY BLANK

Preface

Applicability

Type number:	As from serial number:
5.1004.0602-2XX	0003242507
5.1005.2XXX-XXX	0003242507

Spare Parts

When ordering spare parts it is important that you are aware of the type and serial number of your machine. Use only genuine LELY parts.

Criticality

Criticality = Bulk, 0, 1, 2

- Bulk = Bulk item.
- 0 = Not critical.
- 1 = Not very critical.
- 2 = Critical.

Explanation of Signs Used in the Parts List

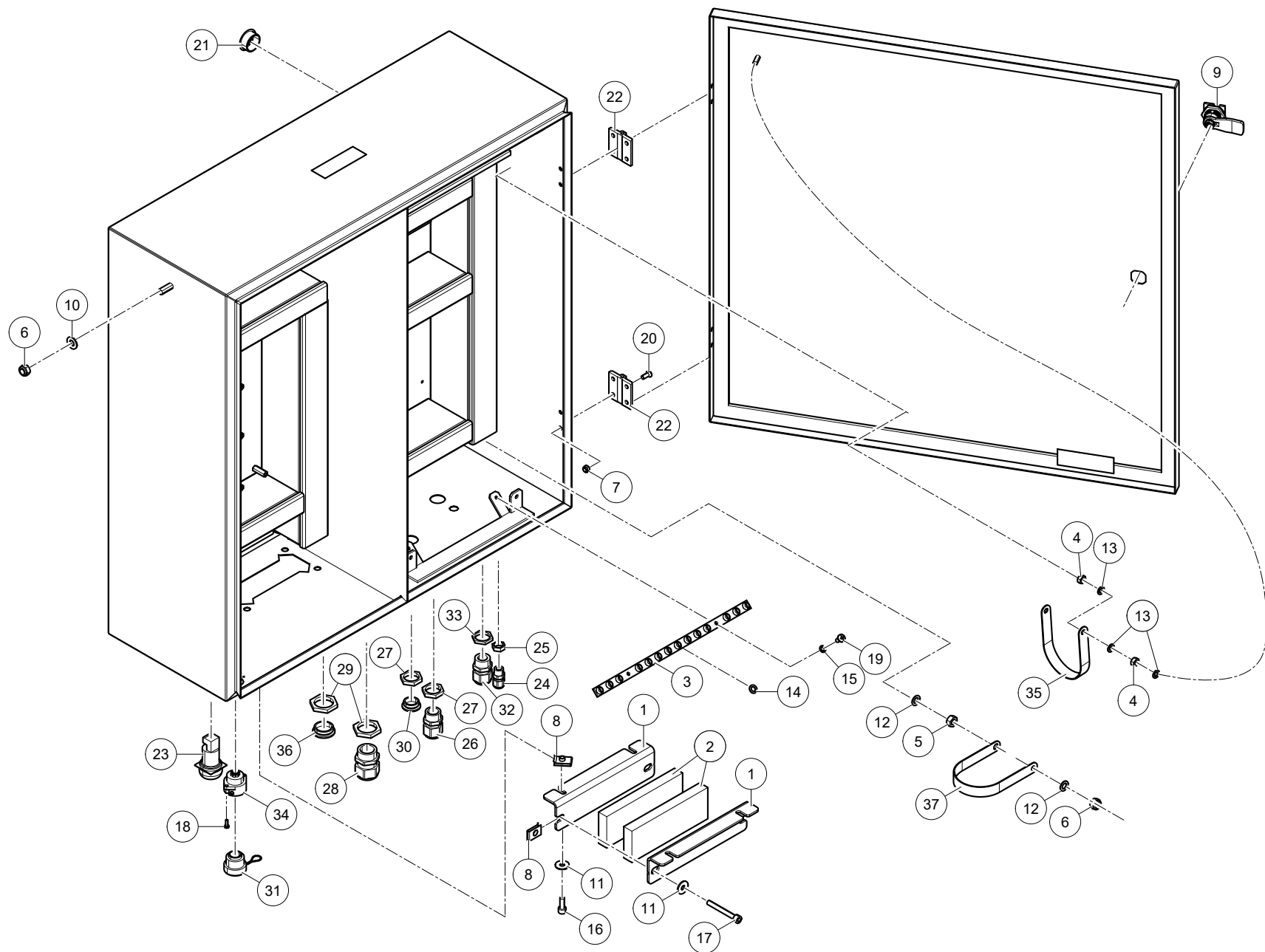
[R] / [RH]	By RH or LH version the position of the part is meant, seen from the rear of the machine.
[L] / [LH]	
[~]	E.g.: LH version is not similar to the RH version, which is actually shown.
[#]	Not available separately.

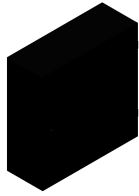


INTENTIONALLY BLANK

Table of Contents

A	3Phn 230/400VAC	6
A-1	Cabinet	6
A-2	Components (24 VDC)	8
A-3	Plate (3PhN 230/400VAC)	10
A-4	Components (3PhN 230/400VAC)	12
B	2Ph 240VAC SP	14
B-1	Cabinet	14
B-2	Components (24 VDC)	16
B-3	Plate (2Ph 240VAC SP)	18
B-4	Components (2Ph 240VAC SP)	20
C	1Phn 230VAC	22
C-1	Cabinet	22
C-2	Components (24 VDC)	24
C-3	Plate (1PhN 230VAC)	26
C-4	Components (1PhN 230VAC)	28
D	3Ph 200/230VAC	30
D-1	Cabinet	30
D-2	Components (24 VDC)	32
D-3	Plate (3Ph 200/230VAC)	34
D-4	Componentes (3Ph 200/230VAC)	36

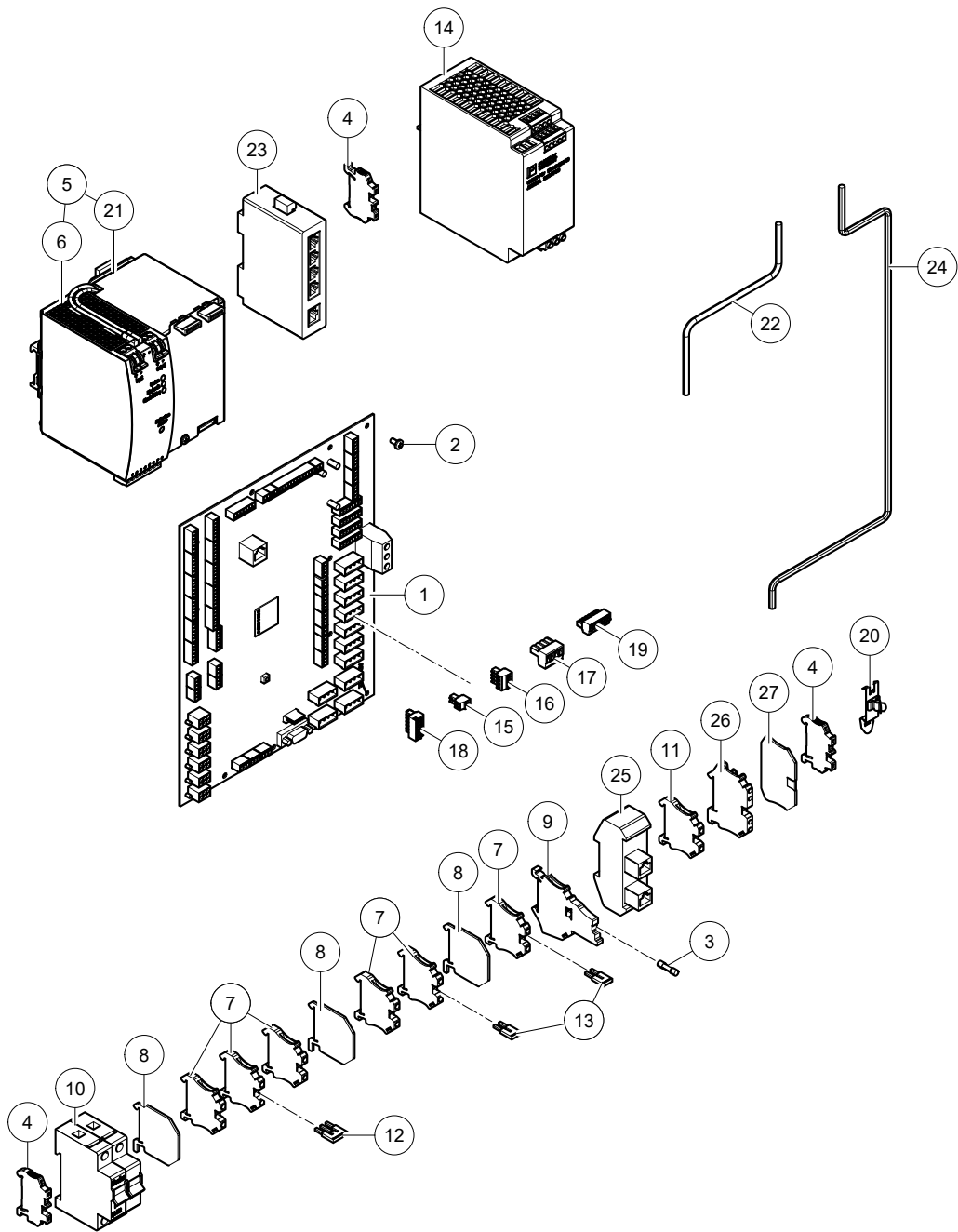


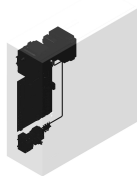


Astronaut

Central Control Box
Central Control Box5.1004.0602-2XX
5.1005.2XXX-XXX0003242507
0003242507

Ref.	Part No	Qty.	Description	Techn. info	Criticality	Remark
1	5.1003.1371.0	2	Clamping plate			
2	5.1003.1372.0	2	Foam tape			
3	5.1004.1400.0	1	Strip			
4	9.1029.0026.4	4	Nut	M6 DIN934-A2-2 s/s		
5	9.1029.0029.0	1	Nut	M8 DIN934-A2-2 s/s		
6	9.1030.0020.4	4	Nut	M8 DIN985-A2-2 s/s		
7	9.1030.0035.5	8	Nut	M5 DIN985-A2-2 s/s		
8	9.1036.0039.3	6	Speed nut	M6 s/s		
9	9.1039.0023.0	1	Lock			
10	9.1048.0050.2	3	Washer	A8.4 DIN125-A2 s/s		
11	9.1048.0095.5	6	Washer	A6.4 DIN9021-A2 s/s		
12	9.1051.0001.6	2	Serr.lock washer	A8.2 DIN6798		
13	9.1051.0006.4	6	Serr.lock washer	A6.4 DIN6798 s/s		
14	9.1051.0014.5	5	Serr.lock washer	A6.4 DIN6798		
15	#####	2	Not separately			
16	9.1057.0060.3	4	S.h. bolt	M6x16 DIN912-A2 s/s		
17	9.1057.0126.6	2	S.h. bolt	M6x50 DIN912-A2 s/s		
18	9.1059.0035.0	2	Button head screw	DIN7985H		
19	#####	2	Not separately	DIN7985-H		
20	9.1060.0044.5	8	Screw	M5x10 s/s		
21	9.1108.0148.6	2	Cap	30-25-10		
22	9.1185.0800.1	2	Hinge			
23	9.1185.0998.0	1	Buzzer	12-24V AC/DC		
24	9.1186.0244.2	1	Swivel	M12x1.5		
25	9.1186.0245.3	1	Swivel nut	M12X1.5 (EMC)		
26	9.1186.0248.6	1	Cable gland	M20x1.5		
27	9.1186.0249.0	2	Swivel nut	M20x1.5		
28	9.1186.0250.1	1	Swivel	M25x1.5		
29	9.1186.0251.2	3	Lock nut	M25x1.5		
30	9.1186.0336.3	1	Swivel	M20x1.5		
31	9.1186.0445.0	1	Cover			
32	9.1186.0535.6	3	Swivel	M20x1.5 brass		
33	9.1186.0559.0	3	Swivel	nut SM-PE-M20x1.5		
34	9.1186.0580.0	1	Connector	E-link female		
35	9.1186.0370.2	1	Litz band			
36	#####	2	Not separately			
37	9.1190.0593.0	1	Litz band			

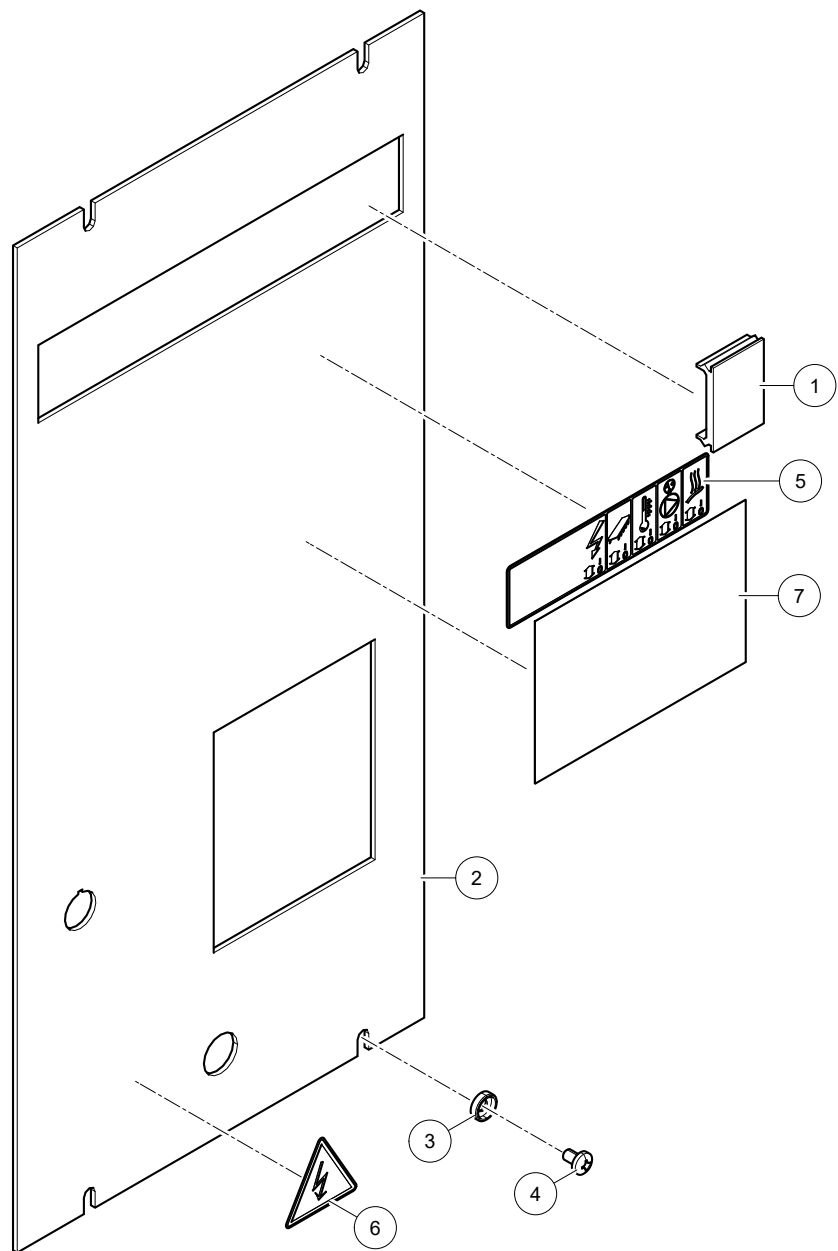




Astronaut

Central Control Box
Central Control Box5.1004.0602-2XX
5.1005.2XXX-XXX0003242507
0003242507

Ref.	Part No	Qty.	Description	Techn. info	Criticality	Remark
1	5.1004.0827.0	1	PCB	ADS2412		
2	9.1059.0031.0	13	Button head screw	DIN 7985-H		
3	9.1185.0559.3	1	Glass fuse	3.15AT		
4	9.1185.0840.6	3	End bracket			
5	#####	1	Not separately			
6	9.1185.0879.0	1	UPS			
7	9.1185.0886.0	6	Connector	UT 4 G electra		
8	9.1185.0887.0	3	Spacer			
9	9.1185.0888.0	1	Fuse	UT 4-HESI (5x20)		
10	9.1185.0889.0	1	Switch			
11	9.1185.0900.0	1	Connector	Ground connector UT 4 PE		
12	9.1185.0906.0	1	Jumper	FBS 3-6		
13	9.1185.0907.0	2	Jumper	FBS 2-6		
14	9.1185.0992.0	1	Power supply	1AC/24DC		
15	9.1186.0569.0	1	Connector	MC 1.5/2-ST3.5		
16	9.1186.0570.0	4	Connector	MC 1.5/4-ST3.5		
17	9.1186.0572.0	1	Connector	MTSB 2.5/4-ST5.08		
18	9.1186.0578.0	1	Connector	MC 1.5/6-ST3.5		
19	9.1186.0579.0	1	Connector	MC 1.5/7-ST3.5		
20	#####	3	Not separately			
21	9.1188.0077.0	1	Battery	For pulse 24V DC 10A		
22	9.1190.0026.0	1	Patch cable	RJ45 cat5e UTP 0.5m		
23	9.1190.0041.0	1	Switch			
24	9.1190.0105.0	1	Cable			
25	9.1190.0452.0	1	Connection Module (Type 2)	(Type 2) RJ45		
26	#####	1	Not separately			
27	#####	1	Not separately			





Astronaut

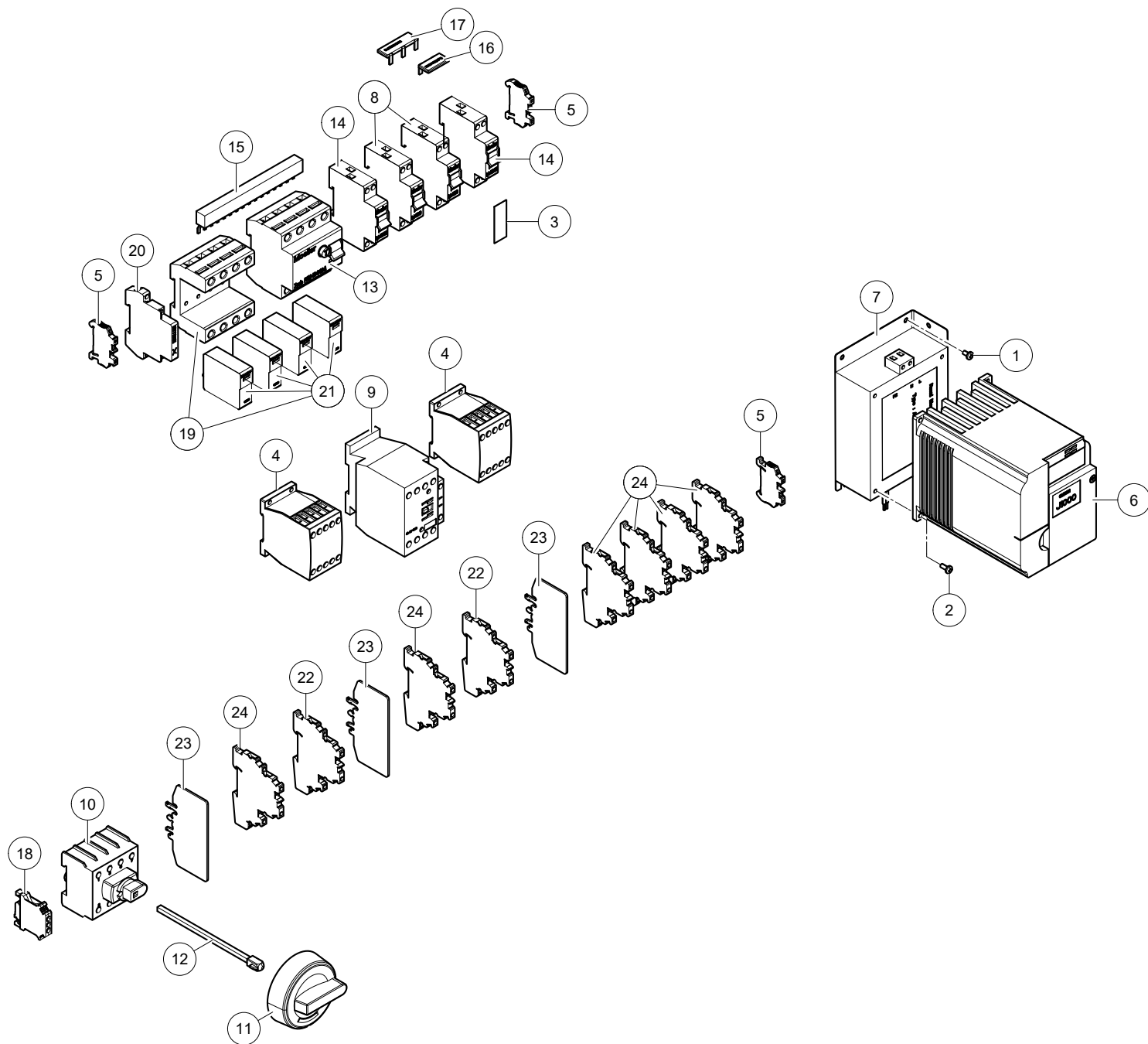
Central Control Box
Central Control Box

5.1004.0602-2XX
5.1005.2XXX-XXX

0003242507
0003242507

Ref.	Part No	Qty.	Description	Techn. info	Criticality	Remark
1	5.1004.1734.0	1	Cover			
2	5.1004.2294.0	1	Cover			
3	9.1048.0127.0	4	O-ring	6.4x15x4 black		
4	9.1059.0030.0	4	Button head screw	DIN7985-H		
5	9.1170.0924.0	1	Decal	"ECC CU 400V"		
6	9.1170.0928.0	1	Decal	High voltage hazard ""50mm CE"		
7	9.1170.0931.0	1	Decal	"Prevent boiler dry heat-up"		



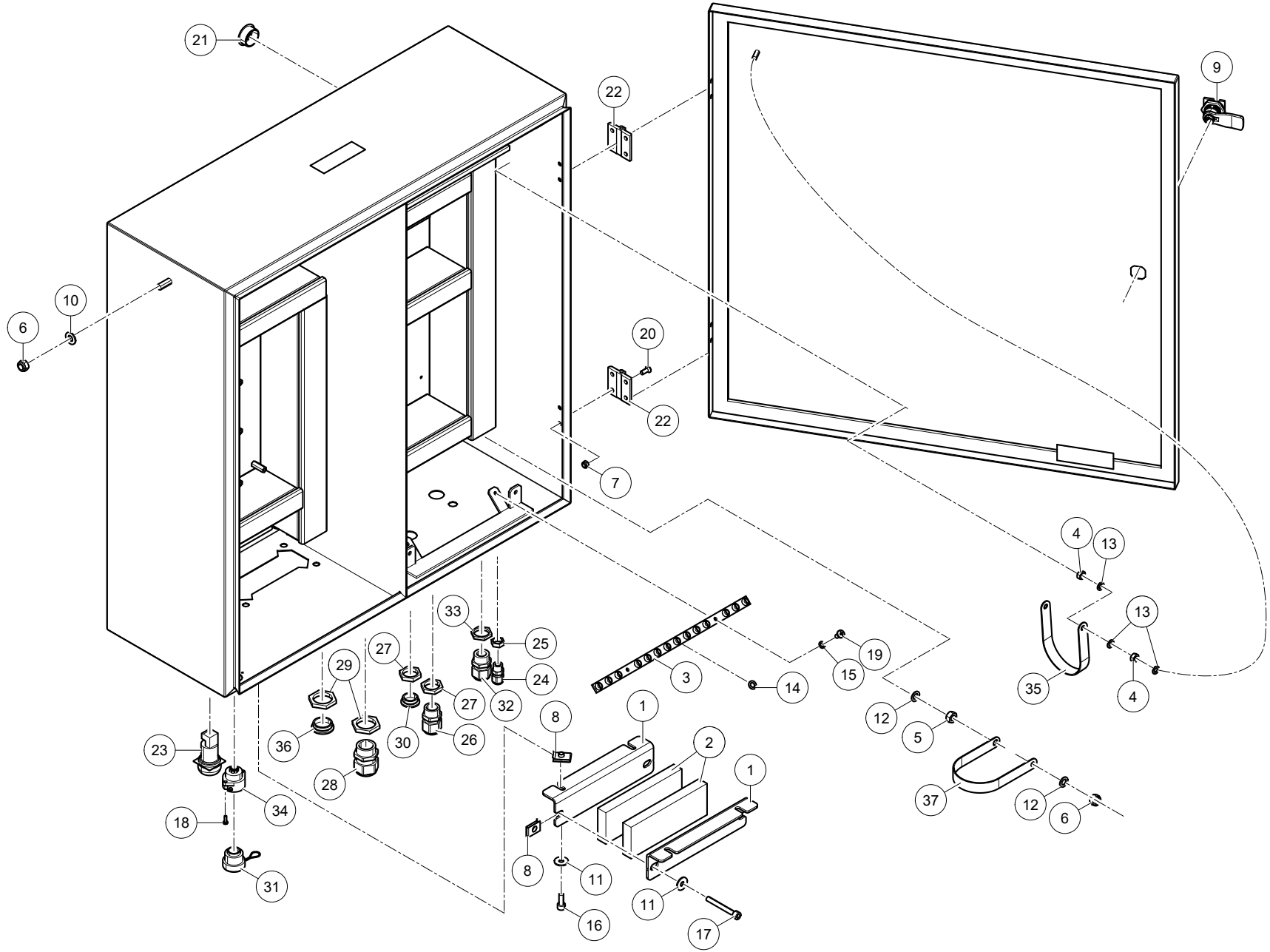


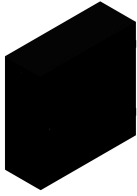


Astronaut

Central Control Box
Central Control Box5.1004.0602-2XX
5.1005.2XXX-XXX0003242507
0003242507

Ref.	Part No	Qty.	Description	Techn. info	Criticality	Remark
1	9.1059.0031.0	4	Button head screw	DIN 7985-H		
2	9.1059.0032.0	3	Button head screw	DIN7985H		
3	#####	1	Not separately			
4	9.1185.0771.0	2	Relay	24VDC		
5	9.1185.0840.6	3	End bracket			
6	9.1185.0845.4	1	Inverter	Inverter J1000 Omron		
7	9.1185.0846.5	1	Filter	A1000 Omron/Rasmi		
8	9.1185.0849.1	2	Automatic circuit breaker	PLN6-C16/1N		
9	9.1185.0858.3	1	Contactora	Möller xStart DIL MP 32- 10		
10	9.1185.0999.0	1	Switch			
11	9.1185.1001.0	1	Switch			
12	9.1185.1002.0	1	Shaft	L=128mm		
13	9.1186.0405.2	1	Earth leakage circuit breaker	PFIM-40/4/03-A		
14	9.1186.0408.5	2	Automatic circuit breaker	PLN6-C10/1N		
15	9.1186.0506.5	1	Buss bar	215644 EVG-4phase/8 20		
16	9.1186.0560.0	1	Buss bar	2 components 18mm		
17	9.1186.0561.0	1	Buss bar	3 components 18mm		
18	#####	1	Not separately			
19	9.1190.0679.0	1	Surge protection Device			
20	9.1190.0680.0	1	Switch			
21	9.1190.0760.0	4	Surge protect unit			
22	9.1190.2032.0	2	Terminal	UT 4-PE/L/L		
23	9.1190.2033.0	3	End piece	ATP-URTK/SP		
24	#####	6	Not separately			

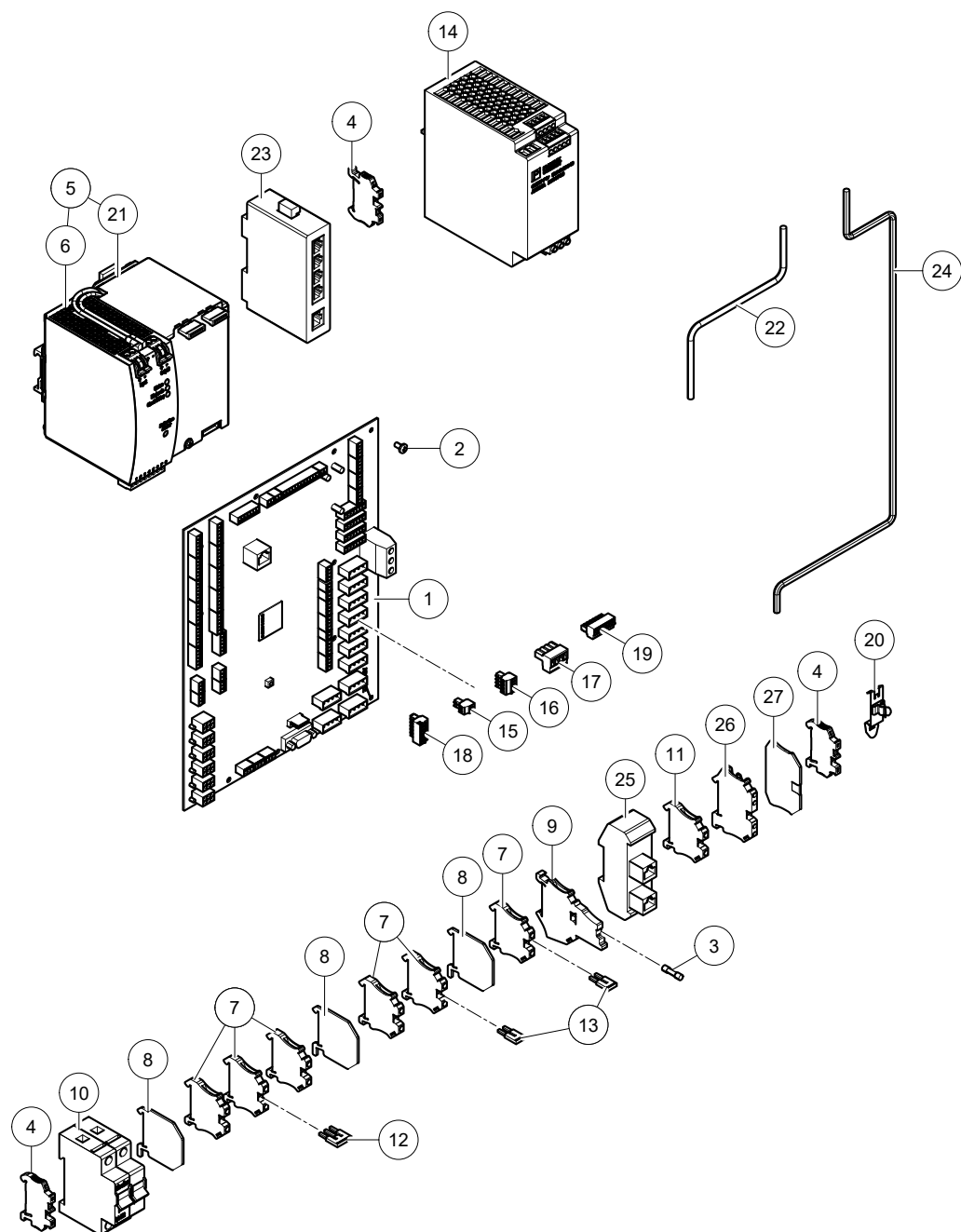


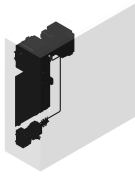


Astronaut

Central Control Box
Central Control Box5.1004.0602-2XX
5.1005.2XXX-XXX0003242507
0003242507

Ref.	Part No	Qty.	Description	Techn. info	Criticality	Remark
1	5.1003.1371.0	2	Clamping plate			
2	5.1003.1372.0	2	Foam tape			
3	5.1004.1400.0	1	Strip			
4	9.1029.0026.4	4	Nut	M6 DIN934-A2-2 s/s		
5	9.1029.0029.0	1	Nut	M8 DIN934-A2-2 s/s		
6	9.1030.0020.4	4	Nut	M8 DIN985-A2-2 s/s		
7	9.1030.0035.5	8	Nut	M5 DIN985-A2-2 s/s		
8	9.1036.0039.3	6	Speed nut	M6 s/s		
9	9.1039.0023.0	1	Lock			
10	9.1048.0050.2	3	Washer	A8.4 DIN125-A2 s/s		
11	9.1048.0095.5	6	Washer	A6.4 DIN9021-A2 s/s		
12	9.1051.0001.6	2	Serr.lock washer	A8.2 DIN6798		
13	9.1051.0006.4	6	Serr.lock washer	A6.4 DIN6798 s/s		
14	9.1051.0014.5	5	Serr.lock washer	A6.4 DIN6798		
15	#####	2	Not separately			
16	9.1057.0060.3	4	S.h. bolt	M6x16 DIN912-A2 s/s		
17	9.1057.0126.6	2	S.h. bolt	M6x50 DIN912-A2 s/s		
18	9.1059.0035.0	2	Button head screw	DIN7985H		
19	#####	2	Not separately	DIN7985-H		
20	9.1060.0044.5	8	Screw	M5x10 s/s		
21	9.1108.0148.6	2	Cap	30-25-10		
22	9.1185.0800.1	2	Hinge			
23	9.1185.0998.0	1	Buzzer	12-24V AC/DC		
24	9.1186.0244.2	1	Swivel	M12x1.5		
25	9.1186.0245.3	1	Swivel nut	M12X1.5 (EMC)		
26	9.1186.0248.6	1	Cable gland	M20x1.5		
27	9.1186.0249.0	2	Swivel nut	M20x1.5		
28	9.1186.0250.1	1	Swivel	M25x1.5		
29	9.1186.0251.2	3	Lock nut	M25x1.5		
30	9.1186.0336.3	1	Swivel	M20x1.5		
31	9.1186.0445.0	1	Cover			
32	9.1186.0535.6	3	Swivel	M20x1.5 brass		
33	9.1186.0559.0	3	Swivel	nut SM-PE-M20x1.5		
34	9.1186.0580.0	1	Connector	E-link female		
35	9.1186.0370.2	1	Litz band			
36	#####	2	Not separately			
37	9.1190.0593.0	1	Litz band			

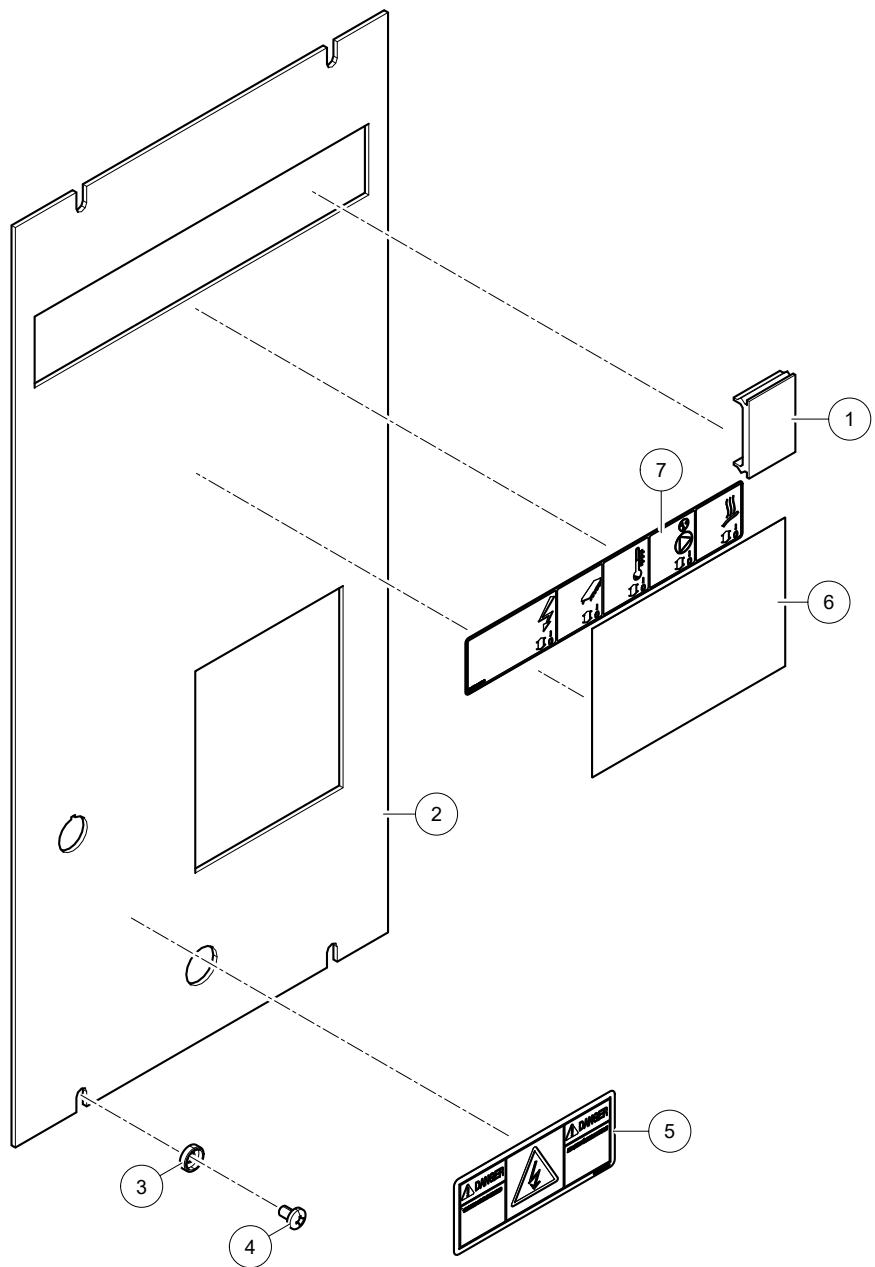




Astronaut

Central Control Box
Central Control Box5.1004.0602-2XX
5.1005.2XXX-XXX0003242507
0003242507

Ref.	Part No	Qty.	Description	Techn. info	Criticality	Remark
1	5.1004.0827.0	1	PCB	ADS2412		
2	9.1059.0031.0	13	Button head screw	DIN 7985-H		
3	9.1185.0559.3	1	Glass fuse	3.15AT		
4	9.1185.0840.6	3	End bracket			
5	#####	1	Not separately			
6	9.1185.0879.0	1	UPS			
7	9.1185.0886.0	6	Connector	UT 4 G electra		
8	9.1185.0887.0	3	Spacer			
9	9.1185.0888.0	1	Fuse	UT 4-HESI (5x20)		
10	9.1185.0889.0	1	Switch			
11	9.1185.0900.0	1	Connector	Ground connector UT 4 PE		
12	9.1185.0906.0	1	Jumper	FBS 3-6		
13	9.1185.0907.0	2	Jumper	FBS 2-6		
14	9.1185.0992.0	1	Power supply	1AC/24DC		
15	9.1186.0569.0	1	Connector	MC 1.5/2-ST3.5		
16	9.1186.0570.0	4	Connector	MC 1.5/4-ST3.5		
17	9.1186.0572.0	1	Connector	MTSB 2.5/4-ST5.08		
18	9.1186.0578.0	1	Connector	MC 1.5/6-ST3.5		
19	9.1186.0579.0	1	Connector	MC 1.5/7-ST3.5		
20	#####	3	Not separately			
21	9.1188.0077.0	1	Battery	For pulse 24V DC 10A		
22	9.1190.0026.0	1	Patch cable	RJ45 cat5e UTP 0.5m		
23	9.1190.0041.0	1	Switch			
24	9.1190.0105.0	1	Cable			
25	9.1190.0452.0	1	Connection Module (Type 2)	(Type 2) RJ45		
26	#####	1	Not separately			
27	#####	1	Not separately			





Astronaut

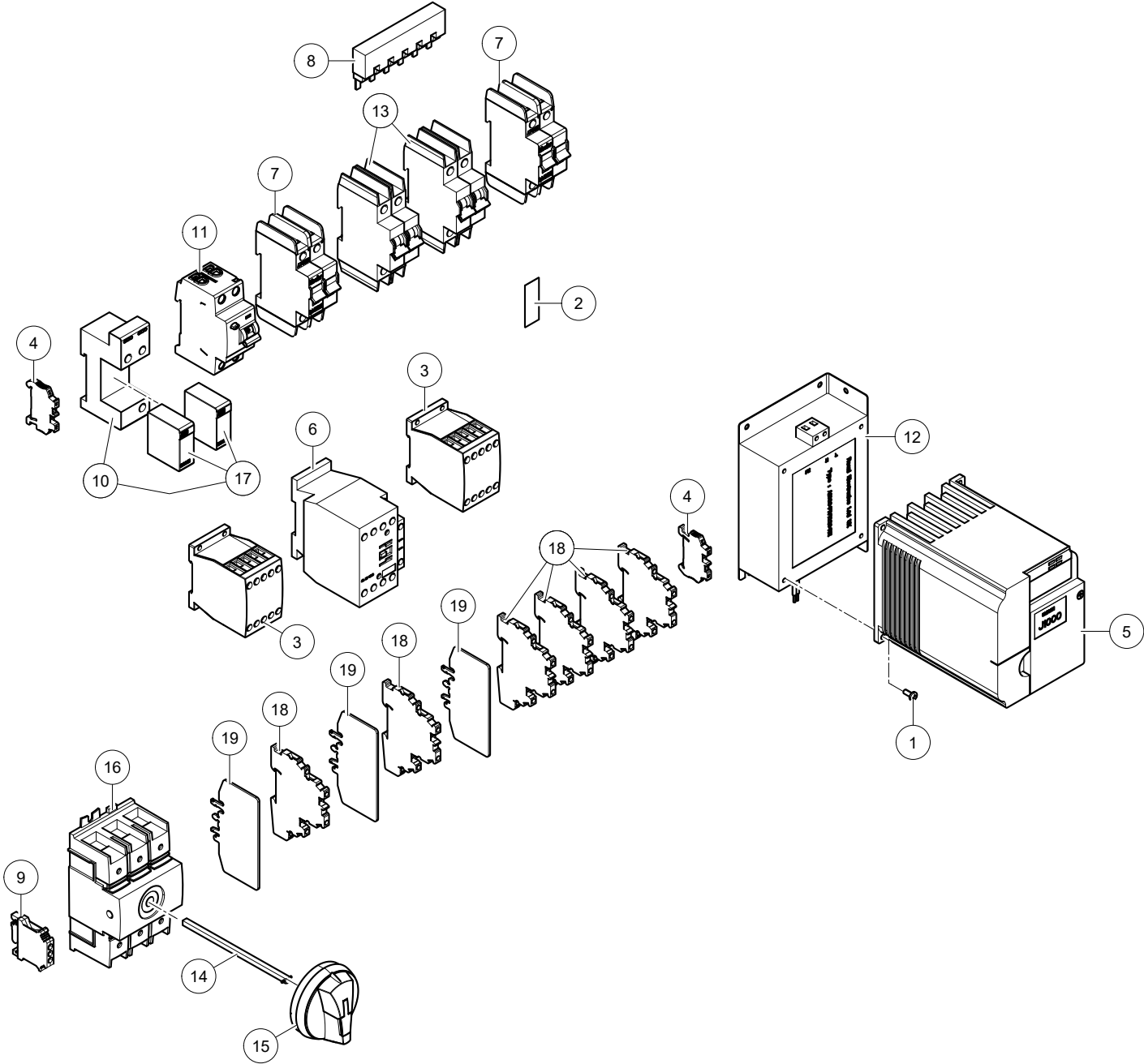
Central Control Box
Central Control Box

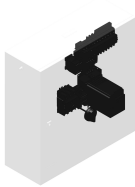
5.1004.0602-2XX
5.1005.2XXX-XXX

0003242507
0003242507

Ref.	Part No	Qty.	Description	Techn. info	Criticality	Remark
1	5.1004.1734.0	1	Cover			
2	5.1004.2294.0	1	Cover			
3	9.1048.0127.0	4	O-ring	6.4x15x4 black		
4	9.1059.0030.0	4	Button head screw	DIN7985-H		
5	9.1170.0583.0	1	Decal	"Electrocution hazard"		
6	9.1170.0931.0	1	Decal	"Prevent boiler dry heat-up"		
7	9.1170.0952.0	1	Decal	"ECC CU 2x120V -0"		







Astronaut

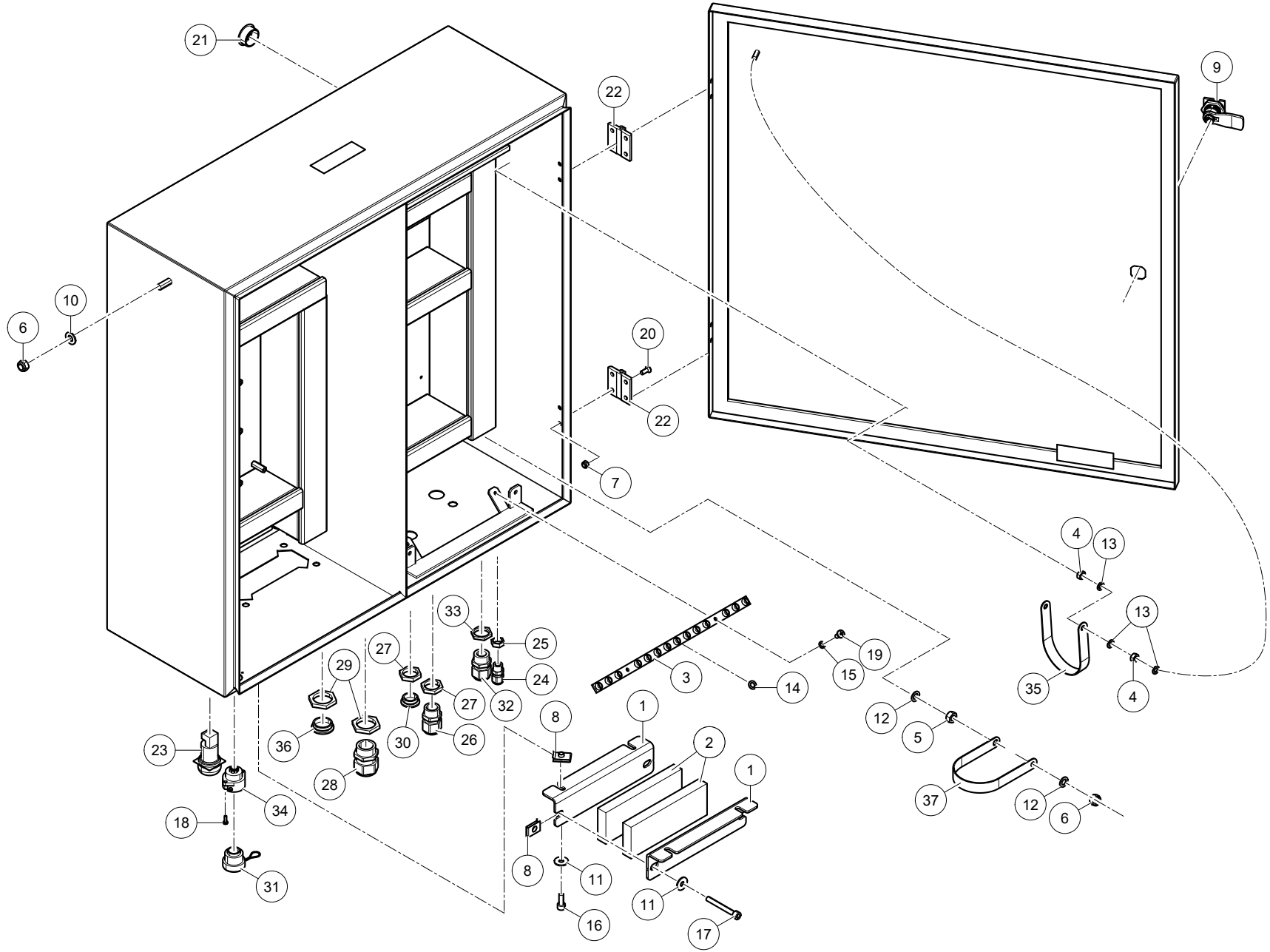
Central Control Box
Central Control Box

5.1004.0602-2XX
5.1005.2XXX-XXX

0003242507
0003242507

Ref.	Part No	Qty.	Description	Techn. info	Criticality	Remark
1	9.1059.0032.0	3	Button head screw	DIN7985H		
2	#####	2	Not separately			
3	9.1185.0771.0	2	Relay	24VDC		
4	9.1185.0840.6	3	End bracket			
5	9.1185.0845.4	1	Inverter	Inverter J1000 Omron		
6	9.1185.0858.3	1	Contacto	Möller xStart DIL MP 32- 10		
7	9.1185.0904.0	2	Fuse holder	Fuse x-pole FAZ-C10/2-NA		
8	9.1190.0121.0	1	Busbar			
9	#####	1	Not separately			
10	9.1190.0547.0	1	Surge protection device	OVR T2 2L 40-150 P TS U		
11	#####	1	Not separately			
12	#####	1	Not separately	(N-A)		
13	#####	2	Not separately			
14	9.1190.0650.0	1	Extension shaft	150mm		
15	9.1190.0651.0	1	Padlockable handles			
16	9.1190.0652.0	1	Pole switch			
17	9.1190.0853.0	2	Replacement Cartridge	ABB OVR T2 40 150CU		
18	9.1190.2032.0	6	Terminal	UT 4-PE/L/L		
19	9.1190.2033.0	3	End piece	ATP-URTK/SP		



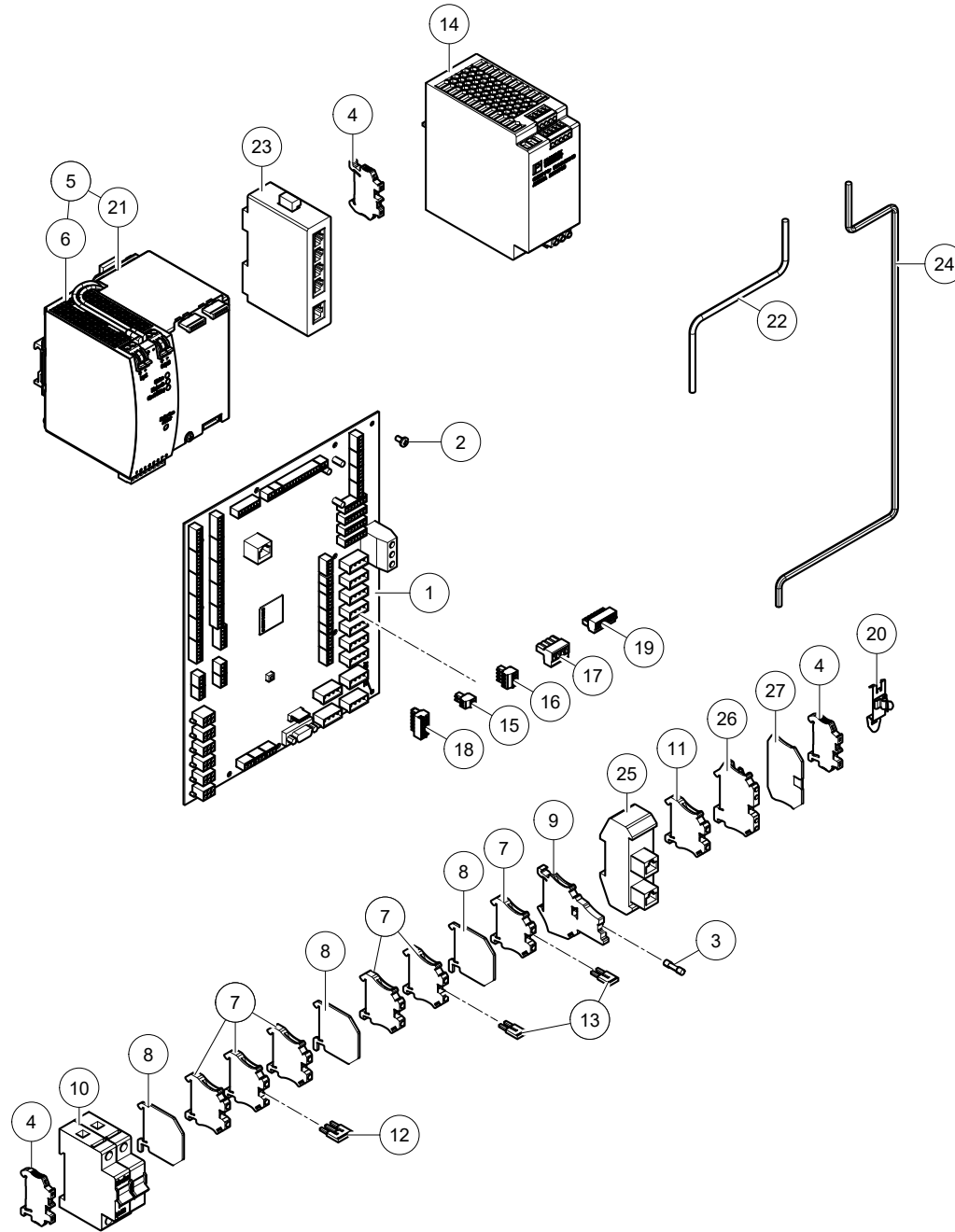


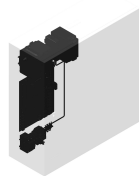


Astronaut

Central Control Box
Central Control Box5.1004.0602-2XX
5.1005.2XXX-XXX0003242507
0003242507

Ref.	Part No	Qty.	Description	Techn. info	Criticality	Remark
1	5.1003.1371.0	2	Clamping plate			
2	5.1003.1372.0	2	Foam tape			
3	5.1004.1400.0	1	Strip			
4	9.1029.0026.4	4	Nut	M6 DIN934-A2-2 s/s		
5	9.1029.0029.0	1	Nut	M8 DIN934-A2-2 s/s		
6	9.1030.0020.4	4	Nut	M8 DIN985-A2-2 s/s		
7	9.1030.0035.5	8	Nut	M5 DIN985-A2-2 s/s		
8	9.1036.0039.3	6	Speed nut	M6 s/s		
9	9.1039.0023.0	1	Lock			
10	9.1048.0050.2	3	Washer	A8.4 DIN125-A2 s/s		
11	9.1048.0095.5	6	Washer	A6.4 DIN9021-A2 s/s		
12	9.1051.0001.6	2	Serr.lock washer	A8.2 DIN6798		
13	9.1051.0006.4	6	Serr.lock washer	A6.4 DIN6798 s/s		
14	9.1051.0014.5	5	Serr.lock washer	A6.4 DIN6798		
15	#####	2	Not separately			
16	9.1057.0060.3	4	S.h. bolt	M6x16 DIN912-A2 s/s		
17	9.1057.0126.6	2	S.h. bolt	M6x50 DIN912-A2 s/s		
18	9.1059.0035.0	2	Button head screw	DIN7985H		
19	#####	2	Not separately	DIN7985-H		
20	9.1060.0044.5	8	Screw	M5x10 s/s		
21	9.1108.0148.6	2	Cap	30-25-10		
22	9.1185.0800.1	2	Hinge			
23	9.1185.0998.0	1	Buzzer	12-24V AC/DC		
24	9.1186.0244.2	1	Swivel	M12x1.5		
25	9.1186.0245.3	1	Swivel nut	M12X1.5 (EMC)		
26	9.1186.0248.6	1	Cable gland	M20x1.5		
27	9.1186.0249.0	2	Swivel nut	M20x1.5		
28	9.1186.0250.1	1	Swivel	M25x1.5		
29	9.1186.0251.2	3	Lock nut	M25x1.5		
30	9.1186.0336.3	1	Swivel	M20x1.5		
31	9.1186.0445.0	1	Cover			
32	9.1186.0535.6	3	Swivel	M20x1.5 brass		
33	9.1186.0559.0	3	Swivel	nut SM-PE-M20x1.5		
34	9.1186.0580.0	1	Connector	E-link female		
35	9.1186.0370.2	1	Litz band			
36	#####	2	Not separately			
37	9.1190.0593.0	1	Litz band			

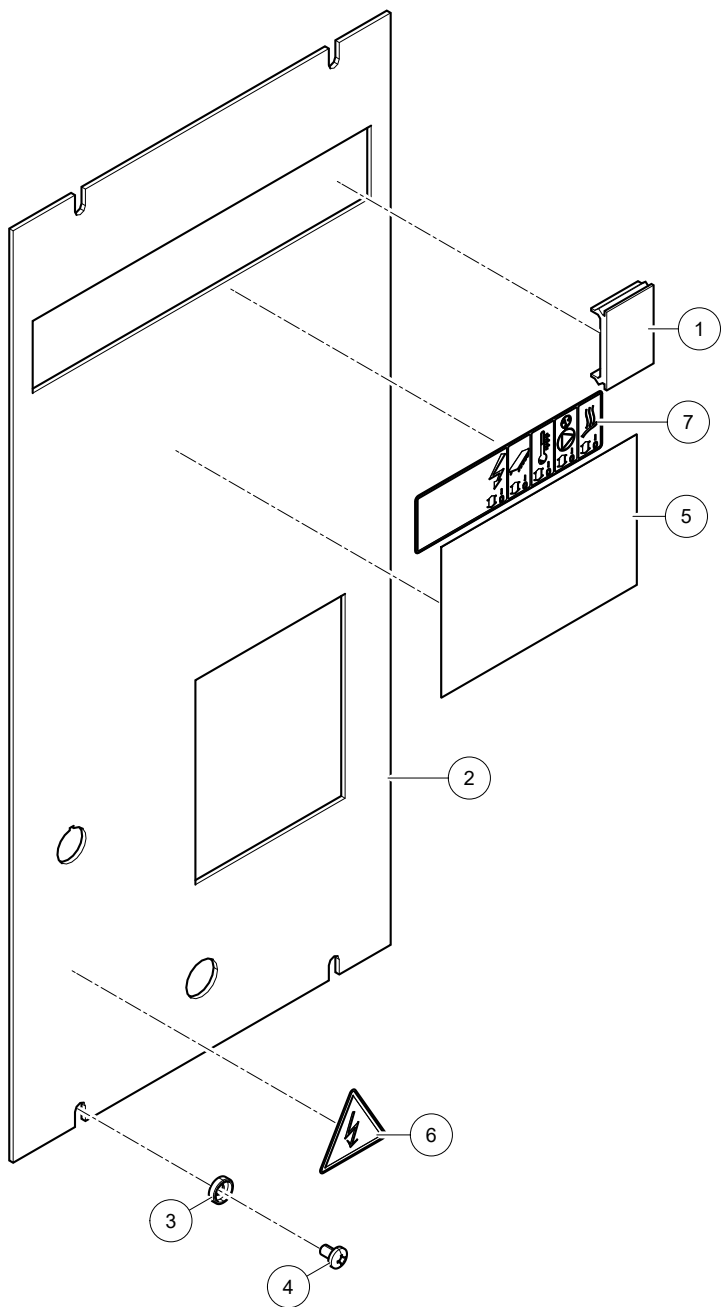


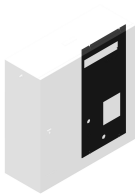


Astronaut

Central Control Box
Central Control Box5.1004.0602-2XX
5.1005.2XXX-XXX0003242507
0003242507

Ref.	Part No	Qty.	Description	Techn. info	Criticality	Remark
1	5.1004.0827.0	1	PCB	ADS2412		
2	9.1059.0031.0	13	Button head screw	DIN 7985-H		
3	9.1185.0559.3	1	Glass fuse	3.15AT		
4	9.1185.0840.6	3	End bracket			
5	#####	1	Not separately			
6	9.1185.0879.0	1	UPS			
7	9.1185.0886.0	6	Connector	UT 4 G electra		
8	9.1185.0887.0	3	Spacer			
9	9.1185.0888.0	1	Fuse	UT 4-HESI (5x20)		
10	9.1185.0889.0	1	Switch			
11	9.1185.0900.0	1	Connector	Ground connector UT 4 PE		
12	9.1185.0906.0	1	Jumper	FBS 3-6		
13	9.1185.0907.0	2	Jumper	FBS 2-6		
14	9.1185.0992.0	1	Power supply	1AC/24DC		
15	9.1186.0569.0	1	Connector	MC 1.5/2-ST3.5		
16	9.1186.0570.0	4	Connector	MC 1.5/4-ST3.5		
17	9.1186.0572.0	1	Connector	MTSB 2.5/4-ST5.08		
18	9.1186.0578.0	1	Connector	MC 1.5/6-ST3.5		
19	9.1186.0579.0	1	Connector	MC 1.5/7-ST3.5		
20	#####	3	Not separately			
21	9.1188.0077.0	1	Battery	For pulse 24V DC 10A		
22	9.1190.0026.0	1	Patch cable	RJ45 cat5e UTP 0.5m		
23	9.1190.0041.0	1	Switch			
24	9.1190.0105.0	1	Cable			
25	9.1190.0452.0	1	Connection Module (Type 2)	(Type 2) RJ45		
26	#####	1	Not separately			
27	#####	1	Not separately			





Astronaut

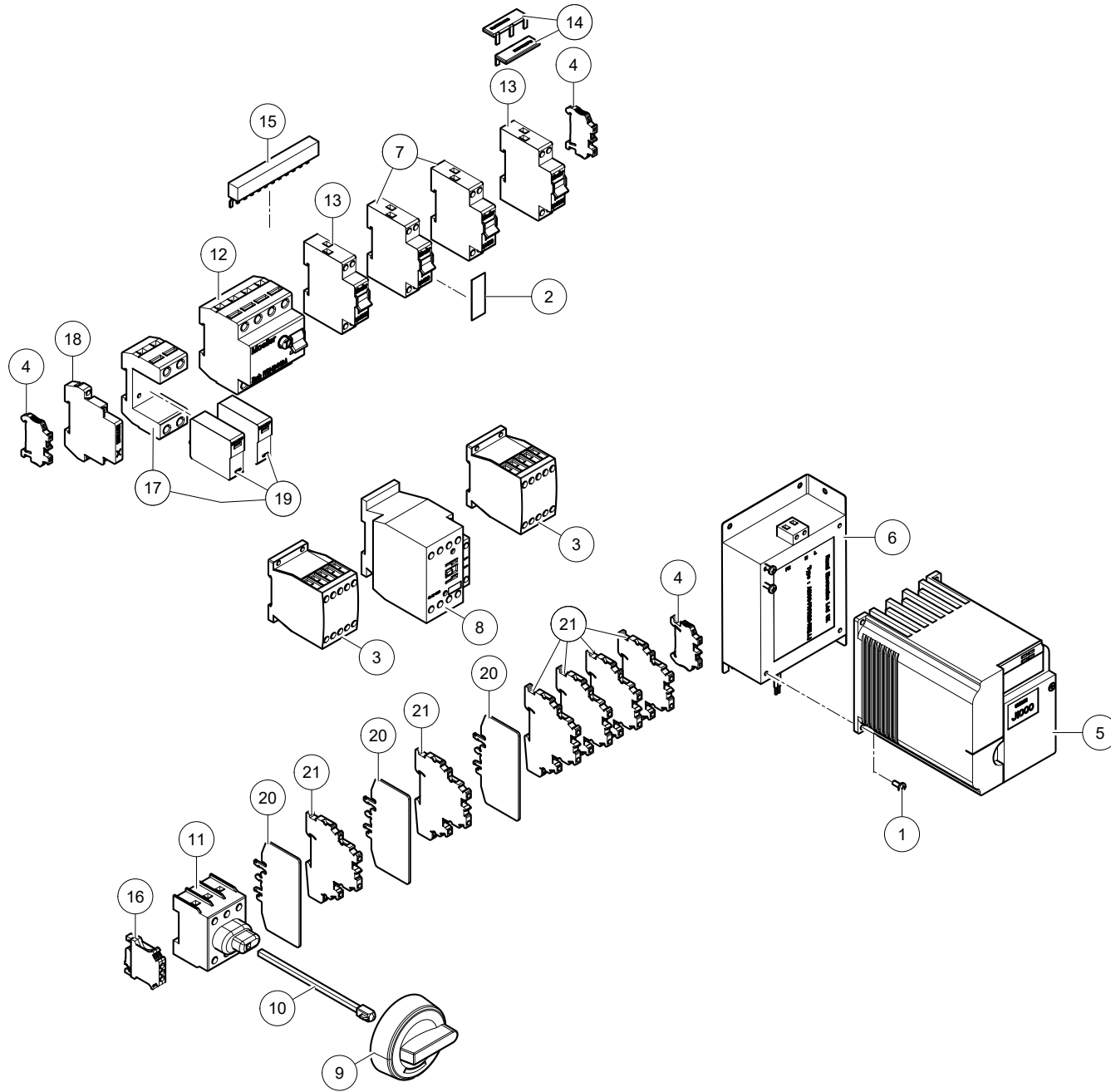
Central Control Box
Central Control Box

5.1004.0602-2XX
5.1005.2XXX-XXX

0003242507
0003242507

Ref.	Part No	Qty.	Description	Techn. info	Criticality	Remark
1	5.1004.1734.0	1	Cover			
2	5.1004.2294.0	1	Cover			
3	9.1048.0127.0	4	O-ring	6.4x15x4 black		
4	9.1059.0030.0	4	Button head screw	DIN7985-H		
5	9.1170.0924.0	1	Decal	"ECC CU 400V"		
6	9.1170.0928.0	1	Decal	High voltage hazard ""50mm CE"		
7	9.1170.0931.0	1	Decal	"Prevent boiler dry heat-up"		



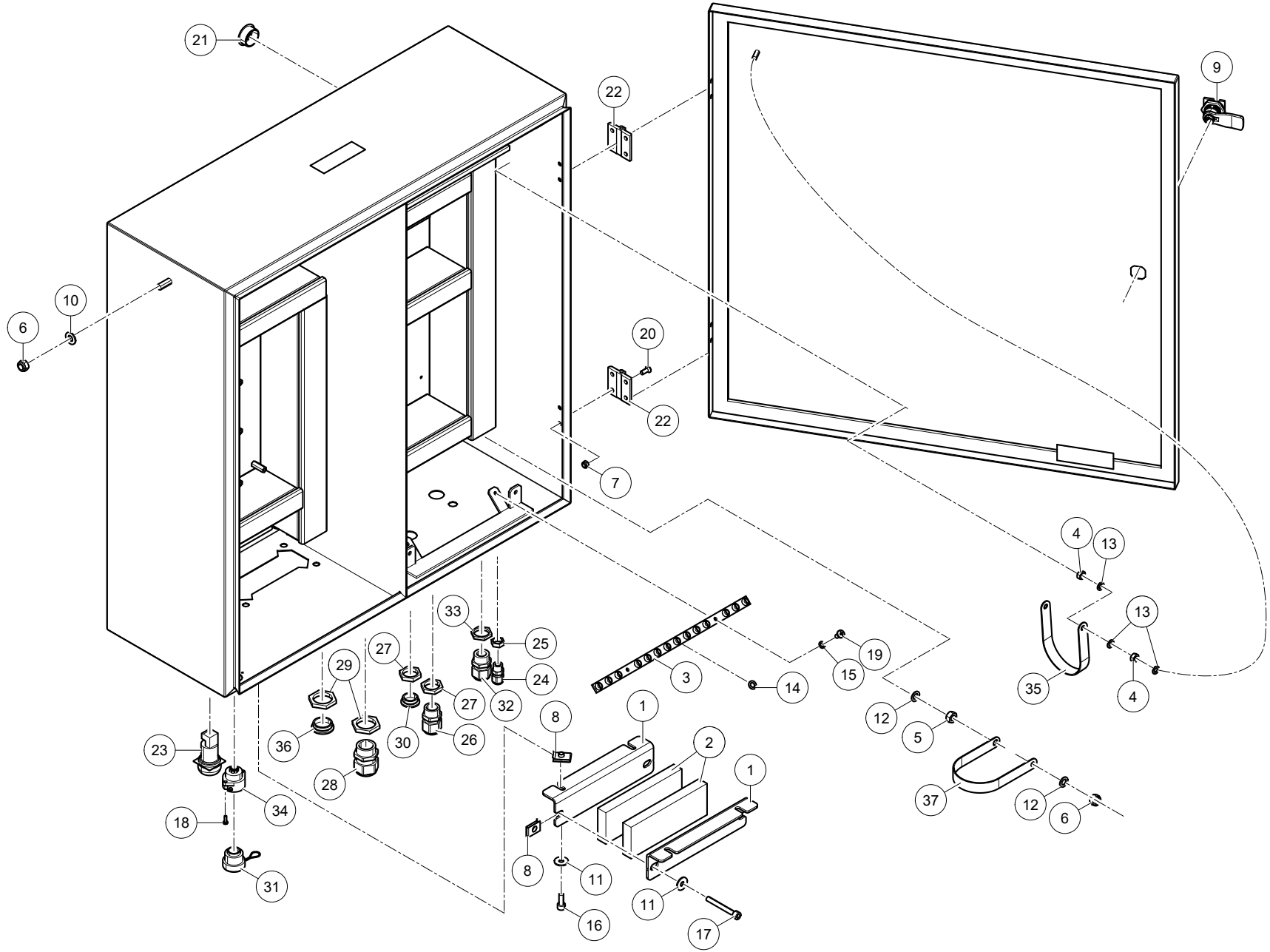


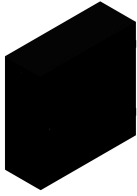


Astronaut

Central Control Box
Central Control Box5.1004.0602-2XX
5.1005.2XXX-XXX0003242507
0003242507

Ref.	Part No	Qty.	Description	Techn. info	Criticality	Remark
1	9.1059.0032.0	3	Button head screw	DIN7985H		
2	#####	1	Not separately			
3	9.1185.0771.0	2	Relay	24VDC		
4	9.1185.0840.6	3	End bracket			
5	9.1185.0845.4	1	Inverter	Inverter J1000 Omron		
6	9.1185.0846.5	1	Filter	A1000 Omron/Rasmi		
7	9.1185.0849.1	2	Automatic circuit breaker	PLN6-C16/1N		
8	9.1185.0858.3	1	Contacto	Möller xStart DIL MP 32- 10		
9	9.1185.1001.0	1	Switch			
10	9.1185.1002.0	1	Shaft	L=128mm		
11	9.1185.1006.0	1	Switch			
12	9.1186.0405.2	1	Earth leakage circuit breaker	PFIM-40/4/03-A		
13	9.1186.0408.5	2	Automatic circuit breaker	PLN6-C10/1N		
14	9.1186.0561.0	2	Buss bar	3 components 18mm		
15	#####	1	Not separately			
16	#####	1	Not separately			
17	9.1190.0677.0	1	Surge Protector base and units			
18	9.1190.0680.0	1	Switch			
19	9.1190.0760.0	2	Surge protect unit			
20	9.1190.2033.0	3	End piece	ATP-URTK/SP		
21	#####	6	Not separately			

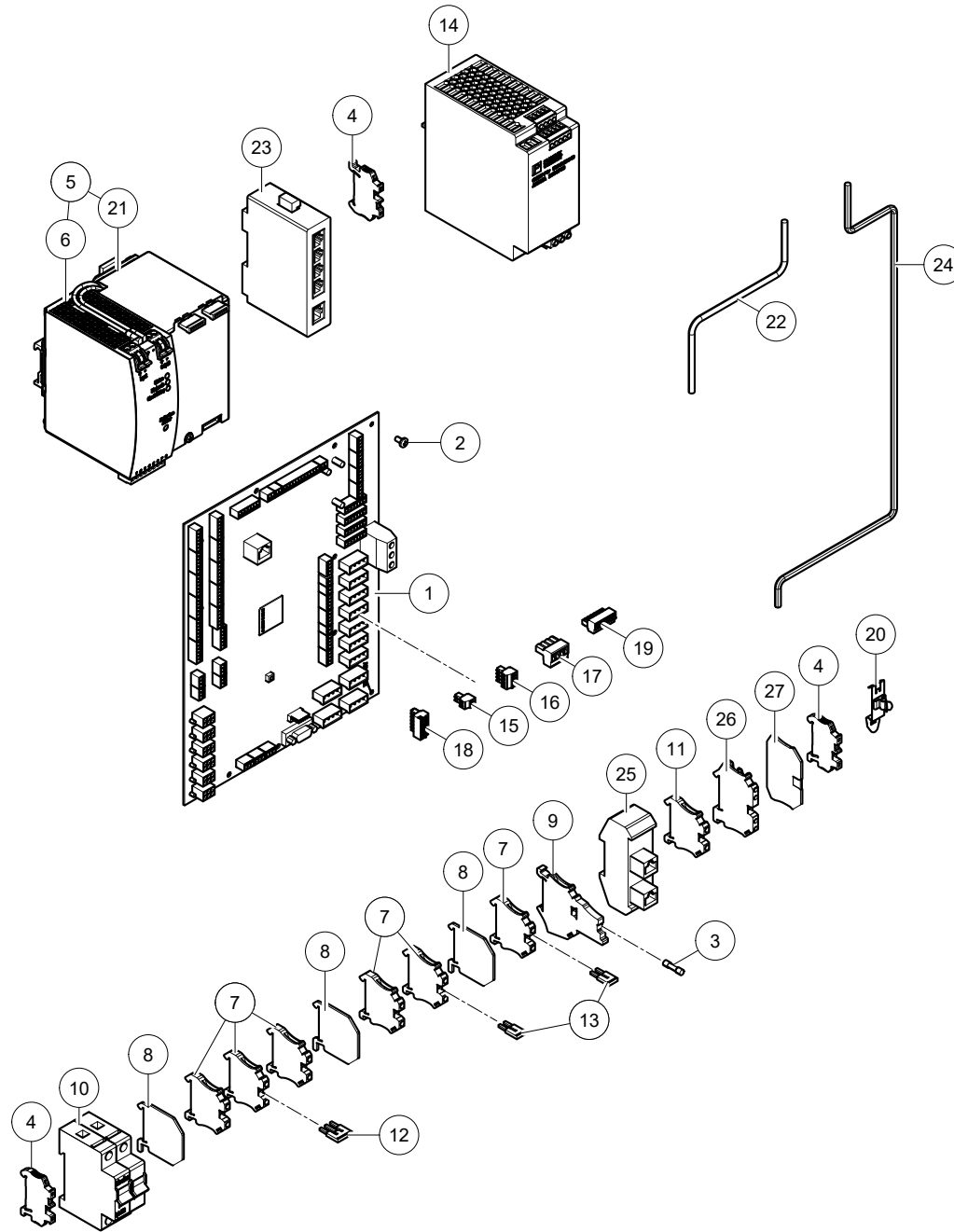


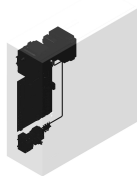


Astronaut

Central Control Box
Central Control Box5.1004.0602-2XX
5.1005.2XXX-XXX0003242507
0003242507

Ref.	Part No	Qty.	Description	Techn. info	Criticality	Remark
1	5.1003.1371.0	2	Clamping plate			
2	5.1003.1372.0	2	Foam tape			
3	5.1004.1400.0	1	Strip			
4	9.1029.0026.4	4	Nut	M6 DIN934-A2-2 s/s		
5	9.1029.0029.0	1	Nut	M8 DIN934-A2-2 s/s		
6	9.1030.0020.4	4	Nut	M8 DIN985-A2-2 s/s		
7	9.1030.0035.5	8	Nut	M5 DIN985-A2-2 s/s		
8	9.1036.0039.3	6	Speed nut	M6 s/s		
9	9.1039.0023.0	1	Lock			
10	9.1048.0050.2	3	Washer	A8.4 DIN125-A2 s/s		
11	9.1048.0095.5	6	Washer	A6.4 DIN9021-A2 s/s		
12	9.1051.0001.6	2	Serr.lock washer	A8.2 DIN6798		
13	9.1051.0006.4	6	Serr.lock washer	A6.4 DIN6798 s/s		
14	9.1051.0014.5	5	Serr.lock washer	A6.4 DIN6798		
15	#####	2	Not separately			
16	9.1057.0060.3	4	S.h. bolt	M6x16 DIN912-A2 s/s		
17	9.1057.0126.6	2	S.h. bolt	M6x50 DIN912-A2 s/s		
18	9.1059.0035.0	2	Button head screw	DIN7985H		
19	#####	2	Not separately	DIN7985-H		
20	9.1060.0044.5	8	Screw	M5x10 s/s		
21	9.1108.0148.6	2	Cap	30-25-10		
22	9.1185.0800.1	2	Hinge			
23	9.1185.0998.0	1	Buzzer	12-24V AC/DC		
24	9.1186.0244.2	1	Swivel	M12x1.5		
25	9.1186.0245.3	1	Swivel nut	M12X1.5 (EMC)		
26	9.1186.0248.6	1	Cable gland	M20x1.5		
27	9.1186.0249.0	2	Swivel nut	M20x1.5		
28	9.1186.0250.1	1	Swivel	M25x1.5		
29	9.1186.0251.2	3	Lock nut	M25x1.5		
30	9.1186.0336.3	1	Swivel	M20x1.5		
31	9.1186.0445.0	1	Cover			
32	9.1186.0535.6	3	Swivel	M20x1.5 brass		
33	9.1186.0559.0	3	Swivel	nut SM-PE-M20x1.5		
34	9.1186.0580.0	1	Connector	E-link female		
35	9.1186.0370.2	1	Litz band			
36	#####	2	Not separately			
37	9.1190.0593.0	1	Litz band			

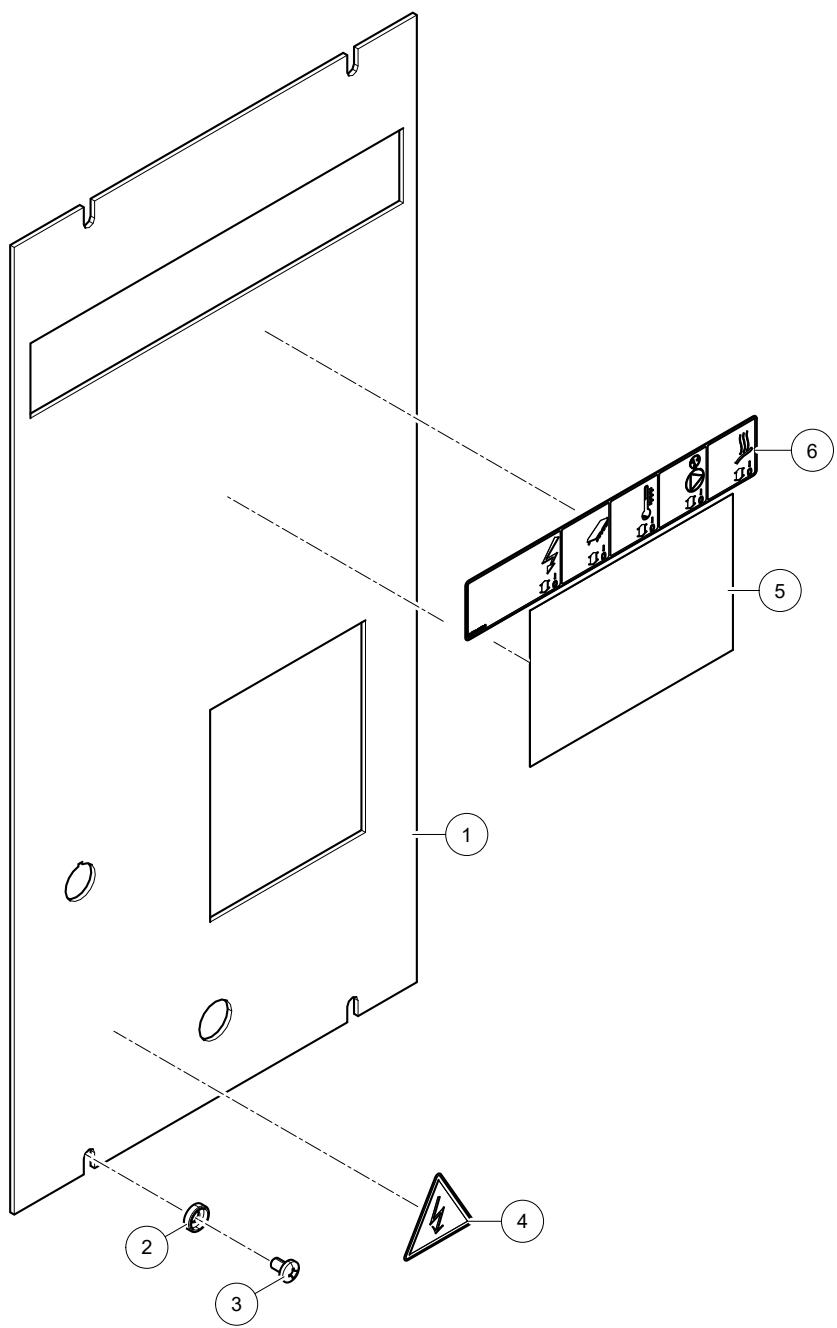


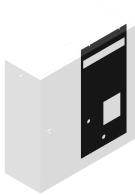


Astronaut

Central Control Box
Central Control Box5.1004.0602-2XX
5.1005.2XXX-XXX0003242507
0003242507

Ref.	Part No	Qty.	Description	Techn. info	Criticality	Remark
1	5.1004.0827.0	1	PCB	ADS2412		
2	9.1059.0031.0	13	Button head screw	DIN 7985-H		
3	9.1185.0559.3	1	Glass fuse	3.15AT		
4	9.1185.0840.6	3	End bracket			
5	#####	1	Not separately			
6	9.1185.0879.0	1	UPS			
7	9.1185.0886.0	6	Connector	UT 4 G electra		
8	9.1185.0887.0	3	Spacer			
9	9.1185.0888.0	1	Fuse	UT 4-HESI (5x20)		
10	9.1185.0889.0	1	Switch			
11	9.1185.0900.0	1	Connector	Ground connector UT 4 PE		
12	9.1185.0906.0	1	Jumper	FBS 3-6		
13	9.1185.0907.0	2	Jumper	FBS 2-6		
14	9.1185.0992.0	1	Power supply	1AC/24DC		
15	9.1186.0569.0	1	Connector	MC 1.5/2-ST3.5		
16	9.1186.0570.0	4	Connector	MC 1.5/4-ST3.5		
17	9.1186.0572.0	1	Connector	MTSB 2.5/4-ST5.08		
18	9.1186.0578.0	1	Connector	MC 1.5/6-ST3.5		
19	9.1186.0579.0	1	Connector	MC 1.5/7-ST3.5		
20	#####	3	Not separately			
21	9.1188.0077.0	1	Battery	For pulse 24V DC 10A		
22	9.1190.0026.0	1	Patch cable	RJ45 cat5e UTP 0.5m		
23	9.1190.0041.0	1	Switch			
24	9.1190.0105.0	1	Cable			
25	9.1190.0452.0	1	Connection Module (Type 2)	(Type 2) RJ45		
26	#####	1	Not separately			
27	#####	1	Not separately			





Astronaut

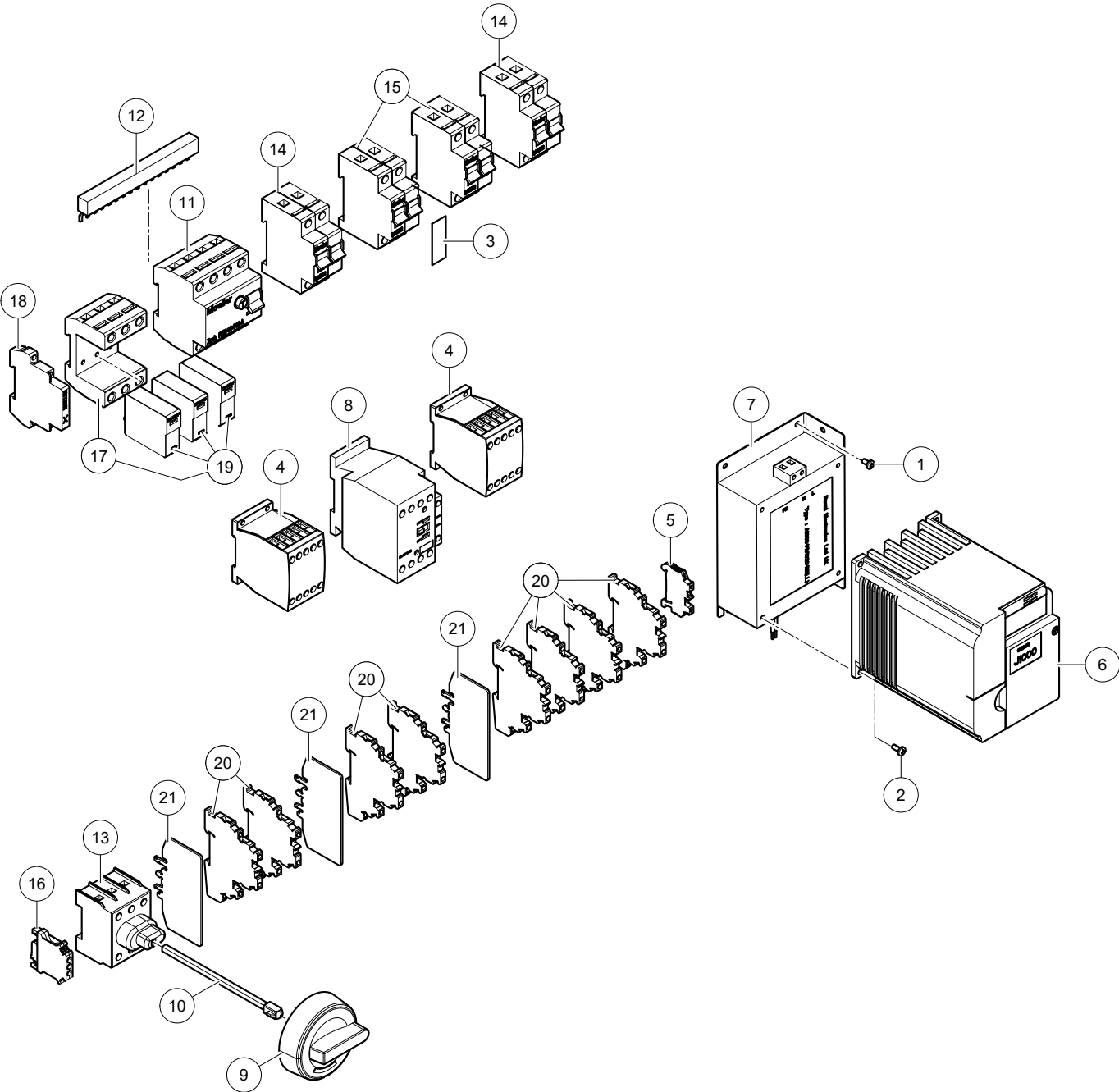
Central Control Box
Central Control Box

5.1004.0602-2XX
5.1005.2XXX-XXX

0003242507
0003242507

Ref.	Part No	Qty.	Description	Techn. info	Criticality	Remark
1	#####	1	Not separately			
2	9.1048.0127.0	4	O-ring	6.4x15x4 black		
3	9.1059.0030.0	4	Button head screw	DIN7985-H		
4	9.1170.0928.0	1	Decal	High voltage hazard ""50mm CE"		
5	9.1170.0931.0	1	Decal	"Prevent boiler dry heat-up"		
6	9.1170.0952.0	1	Decal	"ECC CU 2x120V -0"		







Astronaut

Central Control Box
Central Control Box

5.1004.0602-2XX
5.1005.2XXX-XXX

0003242507
0003242507

Ref.	Part No	Qty.	Description	Techn. info	Criticality	Remark
1	9.1059.0031.0	4	Button head screw	DIN 7985-H		
2	9.1059.0032.0	3	Button head screw	DIN7985H		
3	#####	2	Not separately			
4	9.1185.0771.0	2	Relay	24VDC		
5	9.1185.0840.6	1	End bracket			
6	9.1185.0845.4	1	Inverter	Inverter J1000 Omron		
7	9.1185.0846.5	1	Filter	A1000 Omron/Rasmi		
8	9.1185.0858.3	1	Contactor	Möller xStart DIL MP 32- 10		
9	9.1185.1001.0	1	Switch			
10	9.1185.1002.0	1	Shaft	L=128mm		
11	9.1186.0405.2	1	Earth leakage circuit breaker	PFIM-40/4/03-A		
12	9.1186.0506.5	1	Buss bar	215644 EVG-4phase/8 20		
13	9.1190.0122.0	1	Switch			
14	#####	2	Not separately			
15	#####	2	Not separately			
16	#####	1	Not separately			
17	9.1190.0678.0	1	Surge protection device			
18	9.1190.0680.0	1	Switch			
19	9.1190.0760.0	3	Surge protect unit			
20	9.1190.2032.0	8	Terminal	UT 4-PE/L/L		
21	9.1190.2033.0	3	End piece	ATP-URTK/SP		





INTENTIONALLY BLANK

Lely Industries N.V.

Cornelis van der Lelylaan 1

NL-3147 PB Maassluis

Tel +31 (0)88 - 12 28 221

Fax +31 (0)88 - 12 28 222

